

PRODUCT SELECTION



All solutions for ...



Grease



Oil



Diesel



AdBlue®

NEW



Grease with ease. The **easyFILL 400**

The **easyFILL 400** works without the need of any spring mechanism. Simply insert the cartridge, insert the follower plate and get started. The vacuum in the grease gun head moves the piston smoothly upwards all by itself. Through the Variable Stroke principle the grease gun can be easily operated with minimal lever movement.

- Pressure: 400 bar
- For any 420 ml commercial grease cartridge in accordance with DIN 1284
- Variable stroke - grease supply already at minimal lever movement
- Cartridge can be refilled with the Pressol filling adapter
- Ergonomic handle, slip-proof, optimum power transfer and handling



variable stroke

easyFILL 400	M 10 × 1	
Accessories / Article	14 600	14 600 001
Follower plates 10 pieces (14 900)	×	×
High pressure hose incl. pressed seal, 11 × 300 mm (12 655 828)		×
Tight-fitting precision coupler (12 643)		×

easyFILL ONE 400	M 10 × 1		
Accessories / Article	14 700	14 700 001	14 700 002
Follower plates 10 pieces (14 900)	×	×	×
High pressure hose incl. pressed seal, 11 × 300 mm (12 655 828)		×	
Tight-fitting precision coupler (12 643)		×	×
Spout 150 mm (12 435)			×

Accessories

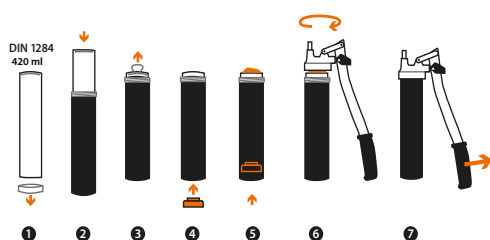
- 14 900 Follower plates for 420 ml cartridge, DIN 1284
12 305 Filling adapter for 420 ml cartridges

Grease Cartridges

- 12 511 Multipurpose grease cartridge NLGI 2
12 514 Multipurpose grease cartridge NLGI 2 with integrated follower plate



7 simple steps for the perfect use Insert, screw in - go!



- 1 Remove cartridge cap
- 2 Insert cartridge into the grease gun tube
- 3 Open pull-o cap
- 4 Insert follower plate into the cartridge from the bottom
- 5 Press follower plate lightly until excess fat emerges (pull-o side)
- 6 Screw in the grease gun tube including the cartridge into the grease gun head
- 7 Slowly initiate the grease gun

GREASING

Robust & completely removable.



NLGI 3

Can be switched with the hand grip from grease delivery with high volume to high pressure.

14 401 211

One hand grease gun

- Setting volume: Max. delivery pressure 200 bar
- Setting pressure: Max. delivery pressure 300 bar
- Hydraulic coupler M 10 x 1 female
- High pressure hose M 10 x 1 male
- Filling nipple

variable stroke

14 203 211

PRELxx PRO M 10 x 1

- Discharge pressure up to 600 bar
- Leak-free precision coupler with secure hold at the grease nipple
- High pressure hose M 10 x 1
- Filling nipple
- Variable Stroke
- **NEW** with hose bracket



12 699

Wall holder for grease guns

For easy and convenient wall mounting!

With the right tools, there are no inaccessible places!
Effortlessly lubricate even the farthest corner.



03 903

Industrial oiler Premium 300 ml

- Double-acting brass pump
- Pump enables drip feed



13 012

Steelpipe-barrel pump

- For oils up to SAE 90
- Delivery rate: 16 l/min
- Steel discharge spout, secured by cap screw – Length of suction tube: 480-900 mm
- Ergonomic handle, non-slip, excellent power transfer and handling

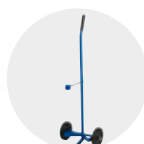
NEW DESIGN



19 214 396

Mobile oil system 3:1

- For oils up to SAE 90
- For 60 l container
- Discharge hose 4 m
- With hose end meter, digital (19 698)
- Trolley (17 004 390)



19 244 396

Mobile oil system 3:1

- For oils up to SAE 90
- For 200 l container
- Discharge hose 4 m
- With hose end meter, digital (19 698)
- Trolley (17 009 390)



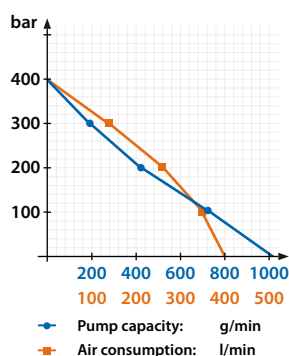
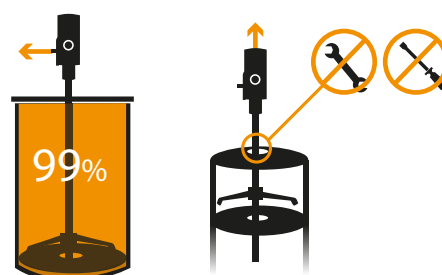


Thoroughly efficient.

A powerful wonder with a craving for grease.

We have vastly improved and optimised the **grease pump 50:1** according to our customers requirements. These updates will make the life of all who need to lubricate high quality machines a little easier. Grease containers can now be emptied almost completely and changing containers has never been easier. Suitable for greases of NLGI class 00-2 (NLGI 3 only limited) in containers between 5-200 kg.

- 99 % barrel emptying
- Quick and easy handling without great assembly effort
- Extremely reliable
- Robust and compact design
- Long lifetime
- Low air consumption
- Low noise level
- Easy to disassemble for cleaning purposes



Multiple applications!



18 764 051

18 766 393

18 786 391



18 102

Grease control gun with grease meter

- 5 digits
- Max. operating pressure 400 bar
- Display of partial quantity and totaliser
- Resettable

Stationary Systems

Article	Container	Follower plate	Hose
18 421 051	for 25 kg	Ø 310-335 mm	4 m
18 764 051	for 50 kg	Ø 335-385 mm	4 m
18 785 051	for 200 kg	Ø 335-385 mm	10 m

Mobile Systems

Article	Container	Follower plate	Hose
19 000 530	for 25 kg	Ø 310-335 mm	4 m
18 766 391	for 50 kg	Ø 335-385 mm	4 m
18 766 393	for 50 kg	Ø 335-385 mm	10 m
18 786 391	for 200 kg	Ø 540-590 mm	4 m



NEW

SPRAYFlxx



www.pressol.com



1,5 l

- Max. operating pressure 2.5 bar
- Level indicator in ml
- High performance pump
- Safety valve
- Ergonomic handle
- Stable form
- Verified materials marked per color



Color detection system for specific application

Multiple purposes – for automotive, industry, domestic, plumbing, gardening and agriculture.



06 911 015 | SPRAYFlxx solvent

- Regulating nozzle, plastic adjusting nut PA

Applicable media: Acetone-free solvent ·

Acetone-free brake cleaner · Anti-corrosive · Impregnation · Formwork oil / parting agent · Wallpaper stripper · Disinfectant · Water



06 912 015 | SPRAYFlxx classic

- Flat spray nozzle 110°

Applicable media: Low-viscosity mineral oils ·

Anti-corrosive protection · Impregnation · Contact spray · Formwork oil / parting agent · Water



06 913 015 | SPRAYFlxx acid

- Flat spray nozzle 110°

Applicable media: Diluted acids (pH 7-14) · Cleaner ·

Neutral detergent · Water



06 914 015 | SPRAYFlxx alkali

- Flat spray nozzle 110°

Applicable media: Diluted alkalis (pH 7-14) · Cleaner ·

Neutral detergent · Water



06 915 015 | SPRAYFlxx garden

- Regulating nozzle, plastic adjusting nut PA

Applicable media: Herbicides · Biological agents · Pesticides · Water

Suited for special purposes and everyday usage



Also available as 1 l version



The new product line

Made for highest performance!

Our newly developed diesel pumps from our Germany-based workshop in Falkenstein are especially made for intensive professional use. A sturdy and functional design and a stable aluminium body ensure a long working life. Advanced engineering and high quality components ensure the highest precision. No plastic materials are used.

Continuous
operation
up to
3 hours



- Delivery hose 4 m
- Suction hose 1,6 m
- Foot valve with suction filter

Also available
as 24 V version

MOBIFlxx Set 35 l/min

23 517 - 12 V

Manual nozzle

23 517 090 - 12 V

Automatic nozzle

MOBMAxx Set 54 l/min

23 519 - 12 V

Manual nozzle

23 519 092 - 12 V

Automatic nozzle



NEW
DESIGN

Also available as 100 l/min version.

23 510 182

Diesel pump-set 60 l/min 230 V

- Automatic nozzle
- In-line meter NUMERlxx³, three digits
- Barrel screw coupling, 19, G 2" male, G 1" male
- Discharge hose 8 m
- Universal control nozzle storage bracket
- Foot valve with suction filter

23 510 447

Diesel pump-set 60 l/min 230 V

- Automatic nozzle
- In-line meter NUMERlxx³, three digits
- Pre-assembled on mounting plate (GPM) for wall and tankmounting
- Discharge hose 8 m
- Diesel-exchange filter, 30 µm
- Foot valve with suction filter

PREMAxx 52 l/min 230 V for 200 -1000 l container

- Discharge hose 4 m
- Suction hose 1,6 m with brass strainer
- Barrel screw coupling G 2" and M 64 x 4 a

23 731

Manual nozzle

23 737

Automatic nozzle



23 192

NUMERlxx³-G 1" f-G 1" f

Oval gear meter-mechanical

- For diesel, fuel oil, self lubricating-low viscosity liquids



Robust &
precise

23 295

Digital in-line meter G 1" f-G 1" f

Turbine wheel

- For diesel, fuel oil, self lubricating-low viscosity liquids





Mobile diesel station

- ADR approval
- Automatic nozzle
- Lockable
- Delivery hose 4 m
- Optional digital counter

mobiMASTER 450 l

26 400 – 35 l/min 12 V
26 401 – 35 l/min 24 V

mobiFITT 12 V 35 l/min

26 440 – 125 l
26 460 – 200 l
26 480 – 300 l

The new product line for AdBlue®.



Mobile tank for AdBlue® mobiBLUE 250 or 450 l

- With digital meter
- Lockable
- Delivery hose 4 m

26 928 – 250 l, 35 l/min 12 V
26 929 – 250 l, 35 l/min 24 V

26 921 – 450 l, 35 l/min 12 V
26 922 – 450 l, 35 l/min 24 V



26 851

Compact system for AdBlue® 1500 l

- Double walled tank
- UV-resistant
- Stainless steel-check valve
- Level indicator and visual leakage indicator
- Plastic adapter G 2" a, 20 mm a, 20 mm a 90°
- Venting valve G 2" a



23 740

PREMAxx 52 l/min 230 V

- Manual nozzle
- Direct installation on container



25 223 001

Set for barrel mounting 35 l/min 230 V

- Manual nozzle



25 228 001

Set for IBC Mounting 1000 l 35 l/min 230 V

- Automatic nozzle
- In-line meter, digital, turbine for AdBlue®
- SEC adapter



Jerrycans for AdBlue®

- PE-with flexible discharge spout

21 141 870 – 5 l
21 143 870 – 10 l
21 147 870 – 20 l

Simple &
practical



21 127 870

Army can for AdBlue®

- PE-with flexible spout
- 20 l

Made by PRESSOL – these are not empty words. About 90% of our products are manufactured in-house at our own sites. The production is subject to permanent quality control. The diversity of our products is matched by the materials used, and the means and methods involved.

Traditionally innovative.

More than 100 years of German quality.



Product Development · Welding / Hand Painting
Plastics Department · CNC-Processing / Lathe Machines
Reinforced Hose Manufacturing · Hand Pump Manufacturing
Hose Reel Manufacturing · UREA Technology
Grease Supply Systems · Grease Gun Manufacturing
Tank Assembly



Cooperative innovation.

PRESSOL supports young researchers.



PRESSOL supports the ECO team of the TUfast e.V. - a student initiative at the Technical University of Munich. The goal of the young team is the development and construction of energy-efficient vehicle prototypes. They then partake in different international competitions on energy efficiency, such as the Shell Eco-Marathon in London. We support them with our expertise in the field of manufacturing and building high-quality special parts.

PRESSOL Schmiergeräte GmbH

Sales

Am Gansacker 10 C · 79224 Umkirch | Germany

Tel.: +49 7665 9346-0 · Fax: +49 7665 9346-130

E-Mail: info@pressol.com · Web: www.pressol.com



www.pressol.com