



**GOYEN**

# DIAPHRAGM VALVES

# 3 SERIES

## PULSE JET VALVES



FS3 Series



DD3 Series

T3 Series



### DESCRIPTION

Superior performance, easy maintenance diaphragm valve available with threaded ports (T3), dresser nut ports (DD3) or flange and slide ports (FS3). Outlet at 90° to inlet. 3 Series valves are available as remote pilot valves and may be converted to integral pilot applications through the use of the screw in pilots of the MIP and 3DS series.

### SUITABLE FOR

Dust collector applications, in particular for reverse pulse jet filter cleaning and its variations including bag filters, cartridge filters, envelope filters, ceramic filters, and sintered metal fibre filters.

### CONSTRUCTION

**Body:** Aluminium (diecast)

**Seals:** Nitrile or Viton (diaphragms reinforced)

**Spring:** 304 SS

**Diaphragm Seat:** PA-6 (standard), Viton coated mild steel

### OPERATION

**Recommended**

**on time range:** 50-500 ms

**Recommended time**

**between pulses:** 1 minute or greater

### MAINTENANCE

Before conducting any maintenance activity on the system ensure that components are fully isolated from pressure and power supplies. Pressure and power should not be reapplied until the valve has been fully assembled.

Diaphragm and pilot inspection should be conducted annually.

### APPROVALS

- Atex II 2D Mechanical (RCA Only)
- CSA (US) C22.2 No 139-1982, UL 429 (CA & RCA)

### INSTALLATION

For your safety do not pressurise system until all valves and pipes are fully secured. Do not attempt to remove a fitted valve while system is under pressure.

1. Prepare supply and blowtube pipes\* to suit valve type and specification. Avoid installing valves underneath the tank.

2. Ensure tank and pipes are free from dirt, rust or other particulate.
3. Ensure supply air is clean and dry.
4. Mount valves to inlet pipes (or flanges, tighten bolts to 10Nm) and blowtube to valves, ensuring no excess thread sealant can enter the valve itself. Ensure blowtube is fully inserted into the valve outlet.
5. Tanks and pipes must be independently restrained from FS and DD valves.
6. Connect RCAC pilot port to remote pilot valve, or install MIP/3DS screw in pilot valve.
7. Apply moderate pressure to system and check for installation leaks.
8. Fully pressurise system.
9. Test fire and listen for proper actuation and crisp pulse noise.

**Valve is not a structural component. Do not rely on valve to retain tanks or pipe.** Refer to Camlock product specifications for installation details.

\*Pipes must be to Schedule 40 outside diameter

SCHEDULE 40 SIZE	OD MM	OD INCHES
3/4"	26.7	1.050
1"	33.4	1.315

### WEIGHTS

SIZE	REMOTE PILOT (RCAC) KG (LBS)	SIZE	REMOTE PILOT (RCAC) KG (LBS)
20T3	0.55 (1.21)	25T3	0.65 (1.43)
20ST3	0.55 (1.21)	25DD3	1.05 (2.32)
20DD3	0.55 (1.21)	25FS3	0.95 (2.08)
20FS3	0.55 (1.21)		

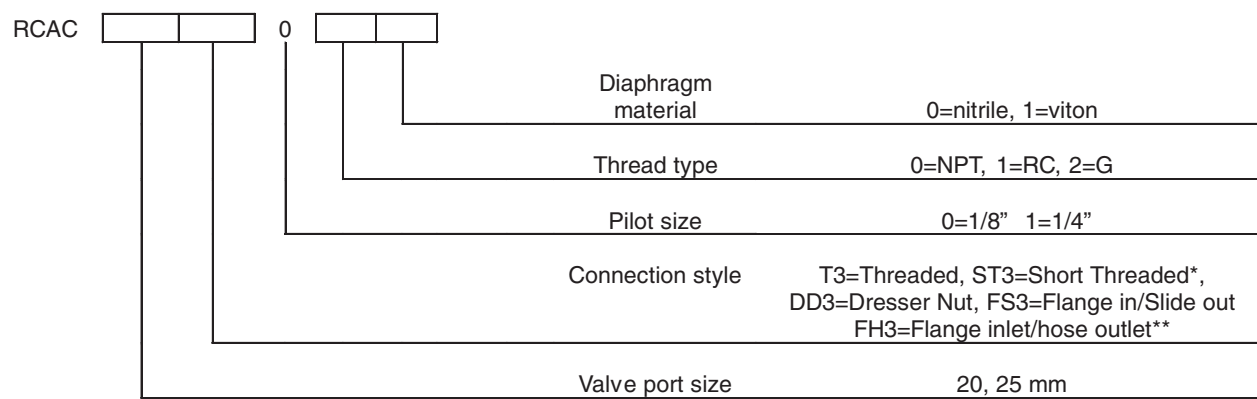
### MAINTENANCE KITS AND ACCESSORIES

MODEL	NITRILE	VITON	INCLUDES
RCAC20T3, ST3, DD3, FS3 RCAC25T3, DD3, FS3, FH3	K2016 K2529	K2017 K2530	Diaphragm kits include main diaphragm, spring, and locking pin.
20DD3 Dresser nut seal kit	K2018	K2019	Nut, seal, and seal retaining ring.
25DD3 Dresser nut seal kit	K2533	K2534	Nut, seal, and seal retaining ring.
20FS3 Outlet seal replacement	G690338	G690338-2	Outlet seal
25FS3 Outlet seal replacement	G690763	G690763-2	Outlet seal
25FS3 Valve to baghouse wall seal	G690125	G690125-2	Wall seal
Camlock for 20 & 25FS3 and 6" round tank	K2514-2		Flange adaptor to mount FS valves to round tanks. Eliminates welding. Refer to Camlock product specification.
Camlock for 20 & 25FS3 and 8" round tank	K2536-2		

## PRODUCT CHARACTERISTICS AND PERFORMANCE

MODEL	PORT SIZE		NUMBER OF DIAPHRAGMS	FLOW		PRESSURE RANGE KPA(Psi)	TEMPERATURE RANGE °C °(F)	
	MM	IN		KV	CV		NITRILE SEALS	VITON SEALS
20T3	20	¾"	1	14	17	30(5)–860(125)	–40(–40) to 82(179.6)	–29(–20.2) to 232(449.6)
20ST3	20	¾"	1	14	17	30(5)–860(125)	–40(–40) to 82(179.6)	–29(–20.2) to 232(449.6)
20DD3	20	¾"	1	14	17	30(5)–860(125)	–40(–40) to 82(179.6)	–29(–20.2) to 232(449.6)
20FS3	20	¾"	1	19	22	30(5)–860(125)	–40(–40) to 82(179.6)	–29(–20.2) to 232(449.6)
25T3	25	1"	1	24	27	30(5)–860(125)	–40(–40) to 82(179.6)	–29(–20.2) to 232(449.6)
25DD3	25	1"	1	24	27	30(5)–860(125)	–40(–40) to 82(179.6)	–29(–20.2) to 232(449.6)
25FS3	25	1"	1	34	40	30(5)–860(125)	–40(–40) to 82(179.6)	–29(–20.2) to 232(449.6)

## ORDER CODE



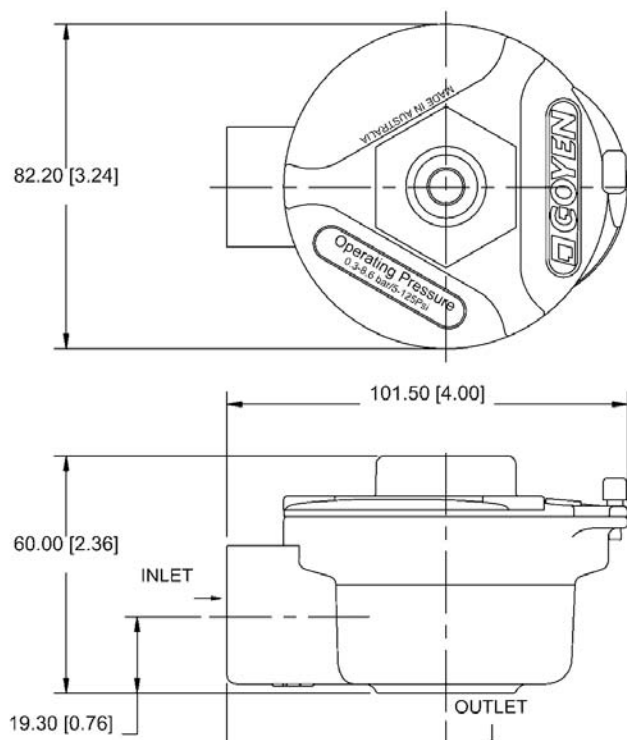
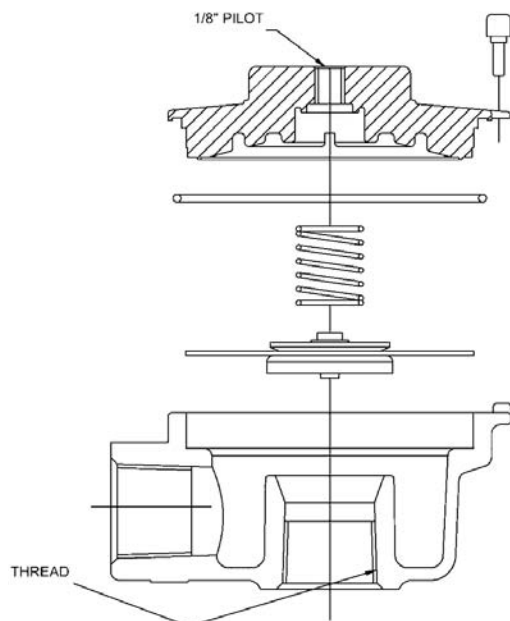
\*Available for 20 [¾"] size only. \*\*Available for 25 [1"] size only.

Examples: RCAC25T3010  
1" threaded port valve with 1/8" pilot, 1" RC port threads, nitrile seals.  
RCAC20FS3001  
¾" flange inlet slide seal outlet port valve with 1/8" NPT remote pilot port and viton seals.

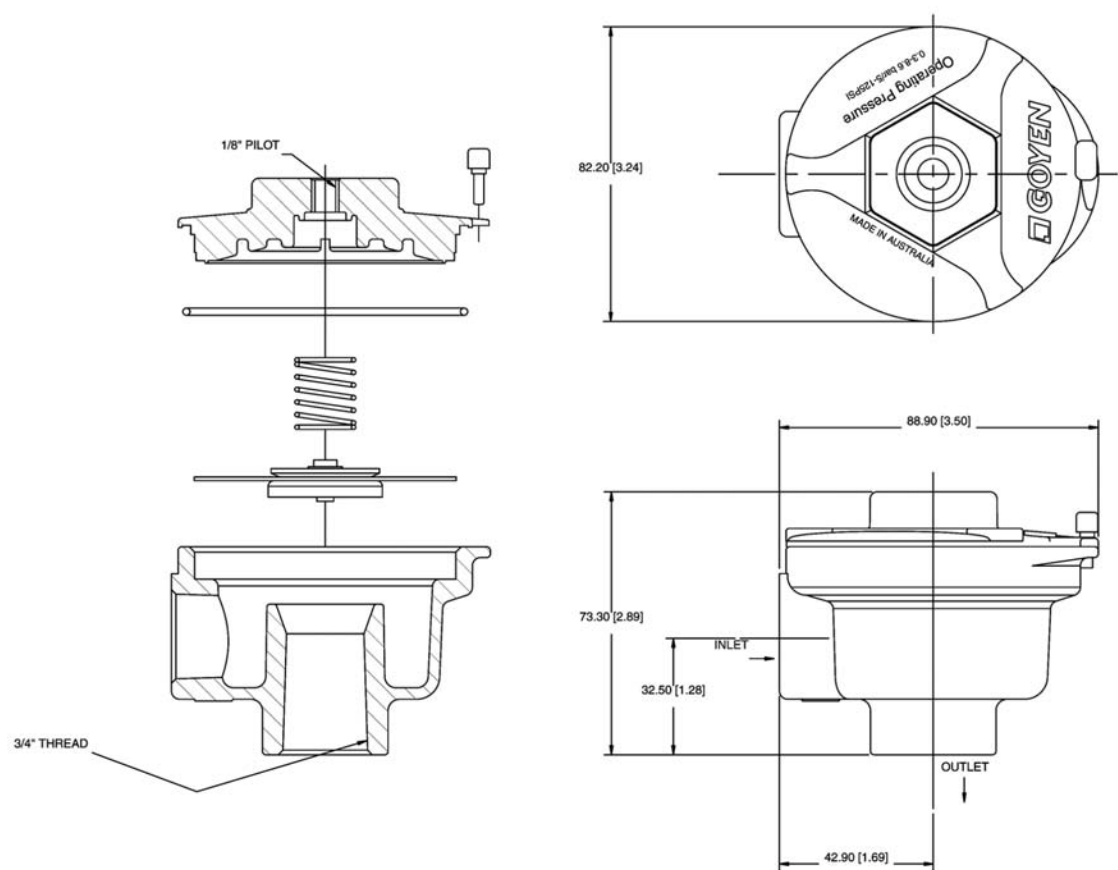
## DIMENSIONS

(Dimensions in mm and [inches])

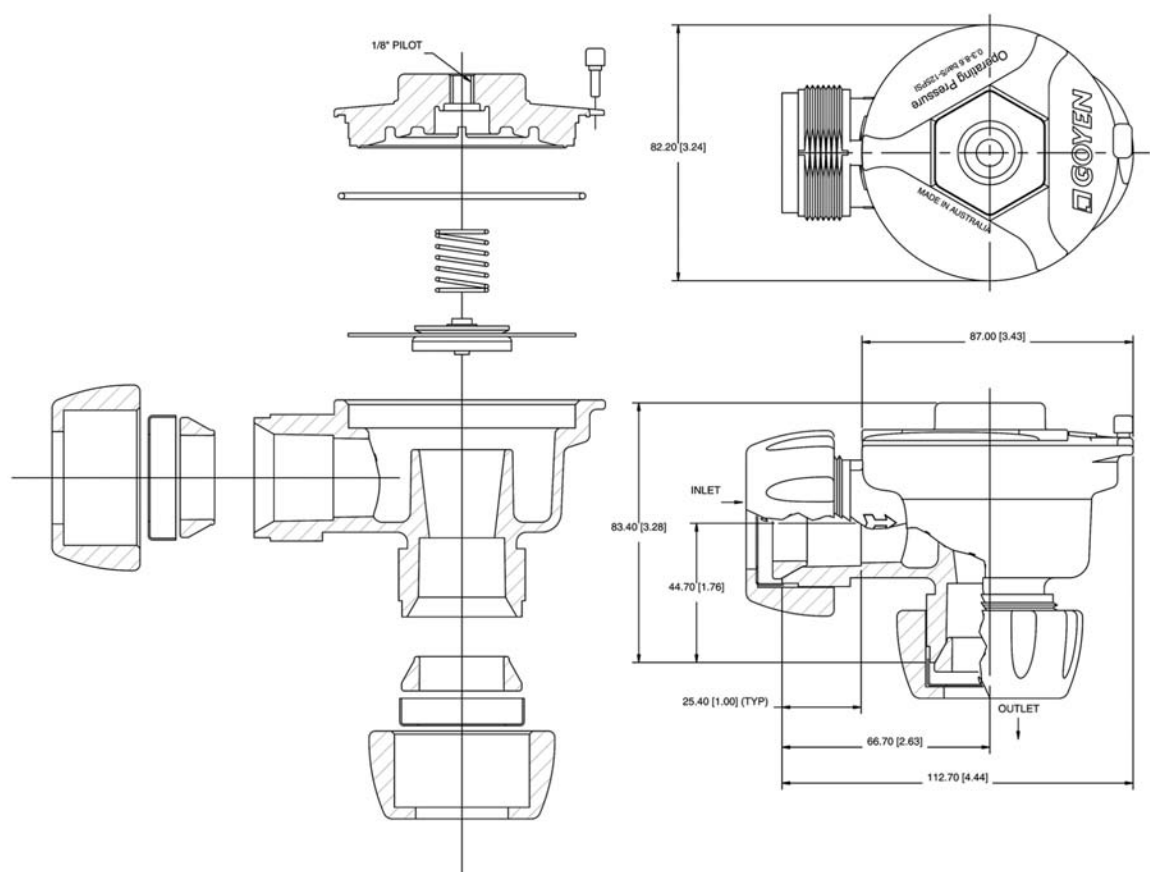
### RCAC20T3



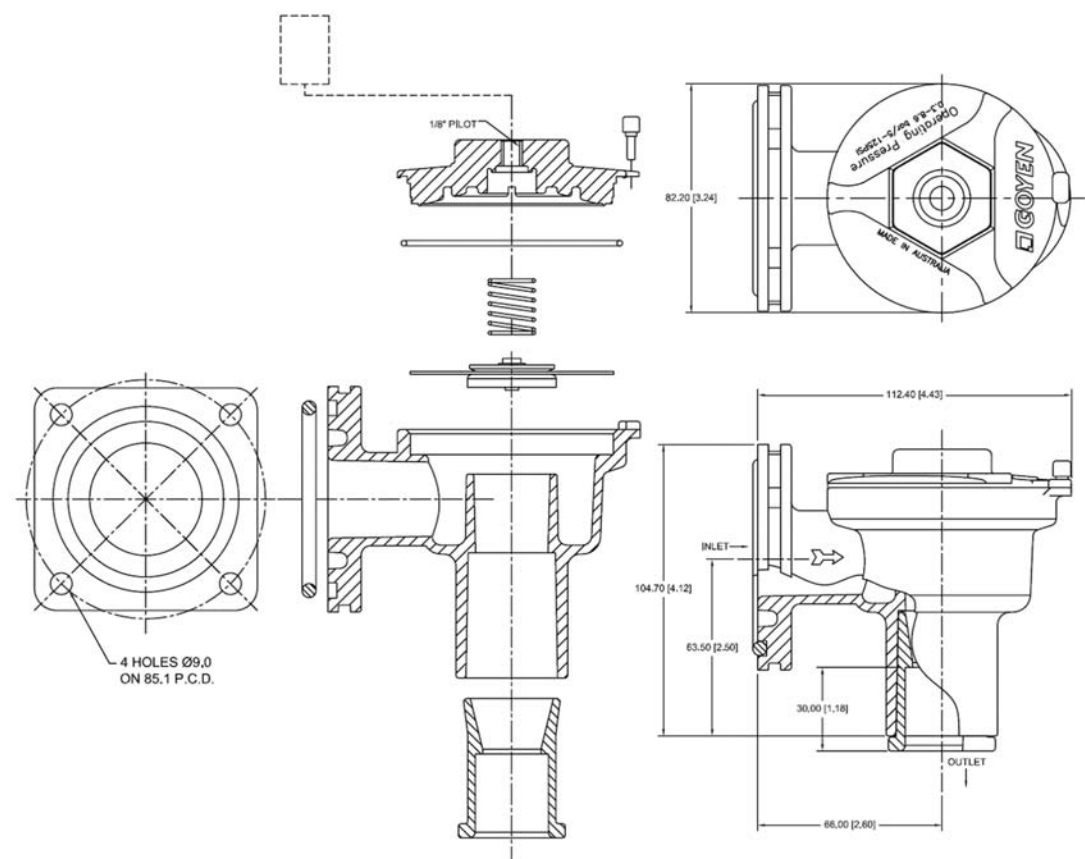
RCAC20ST3



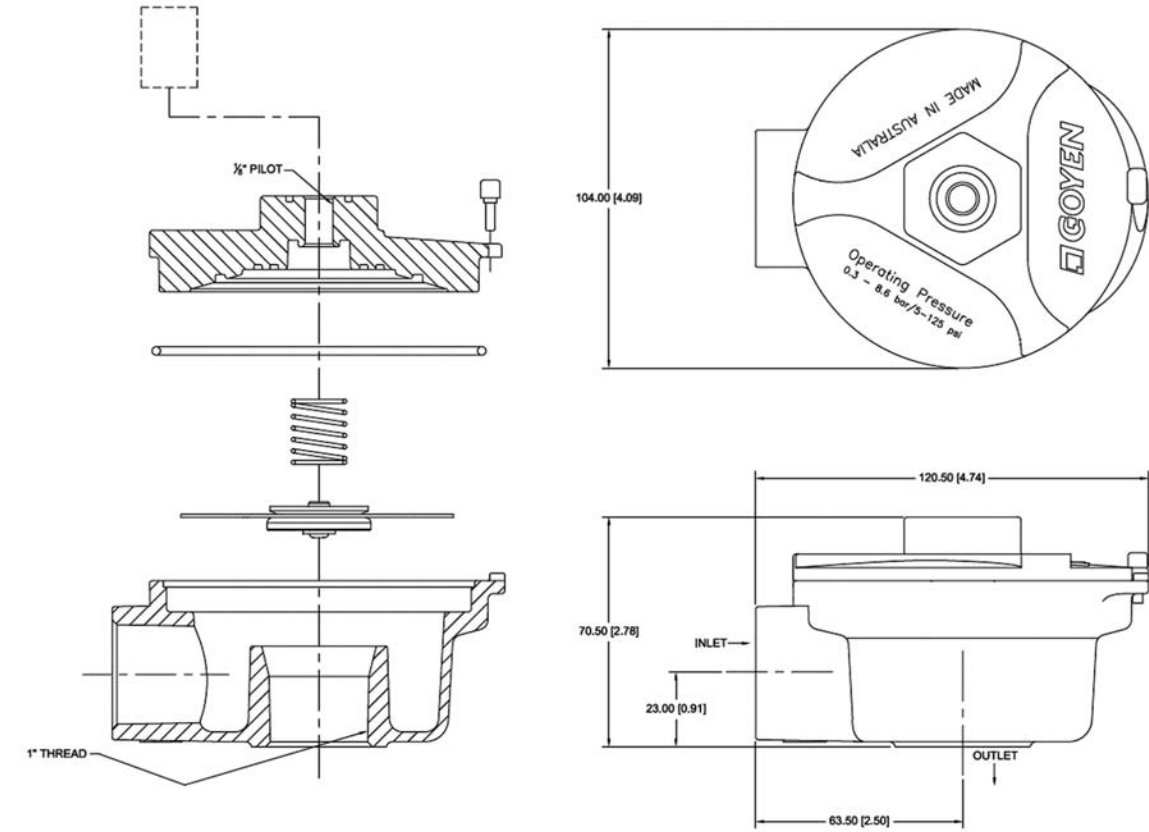
RCAC20DD3



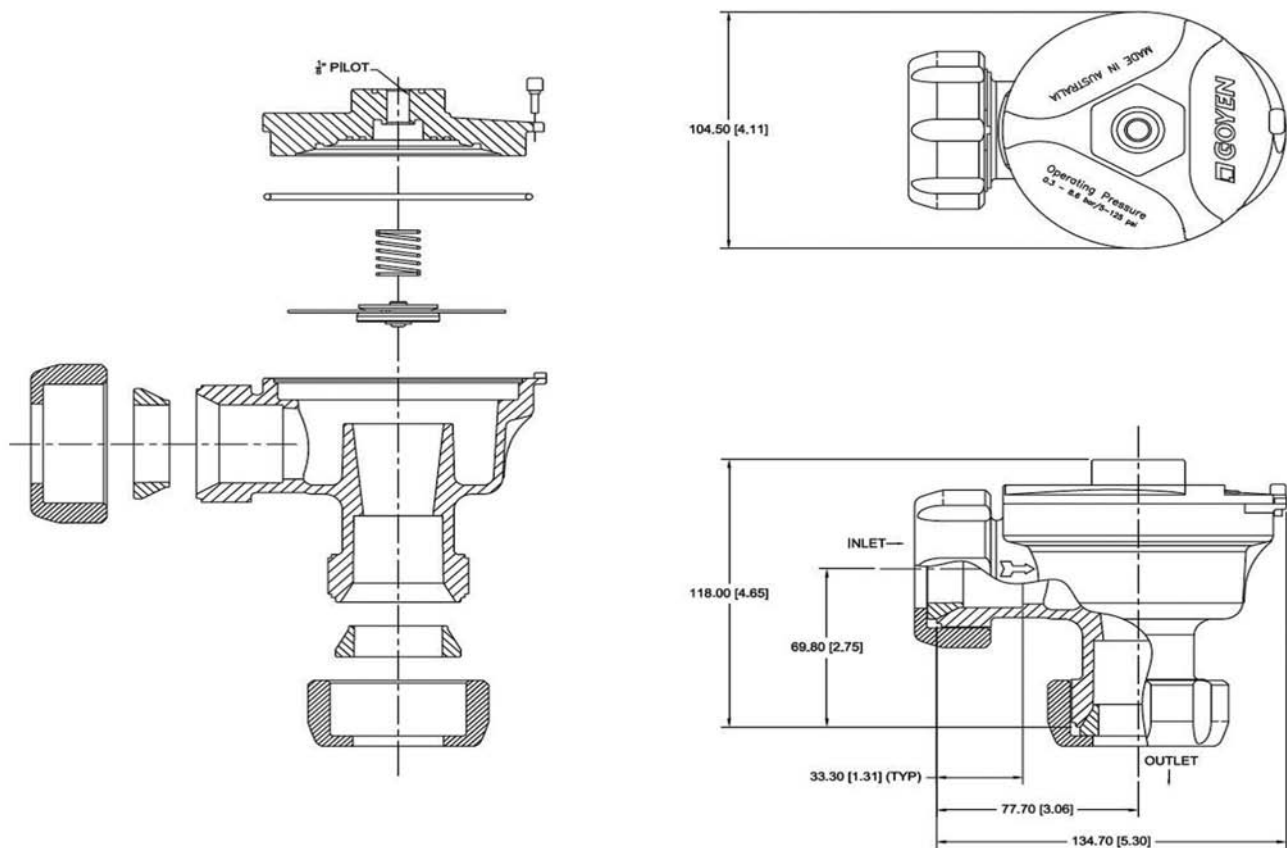
RCAC20FS3



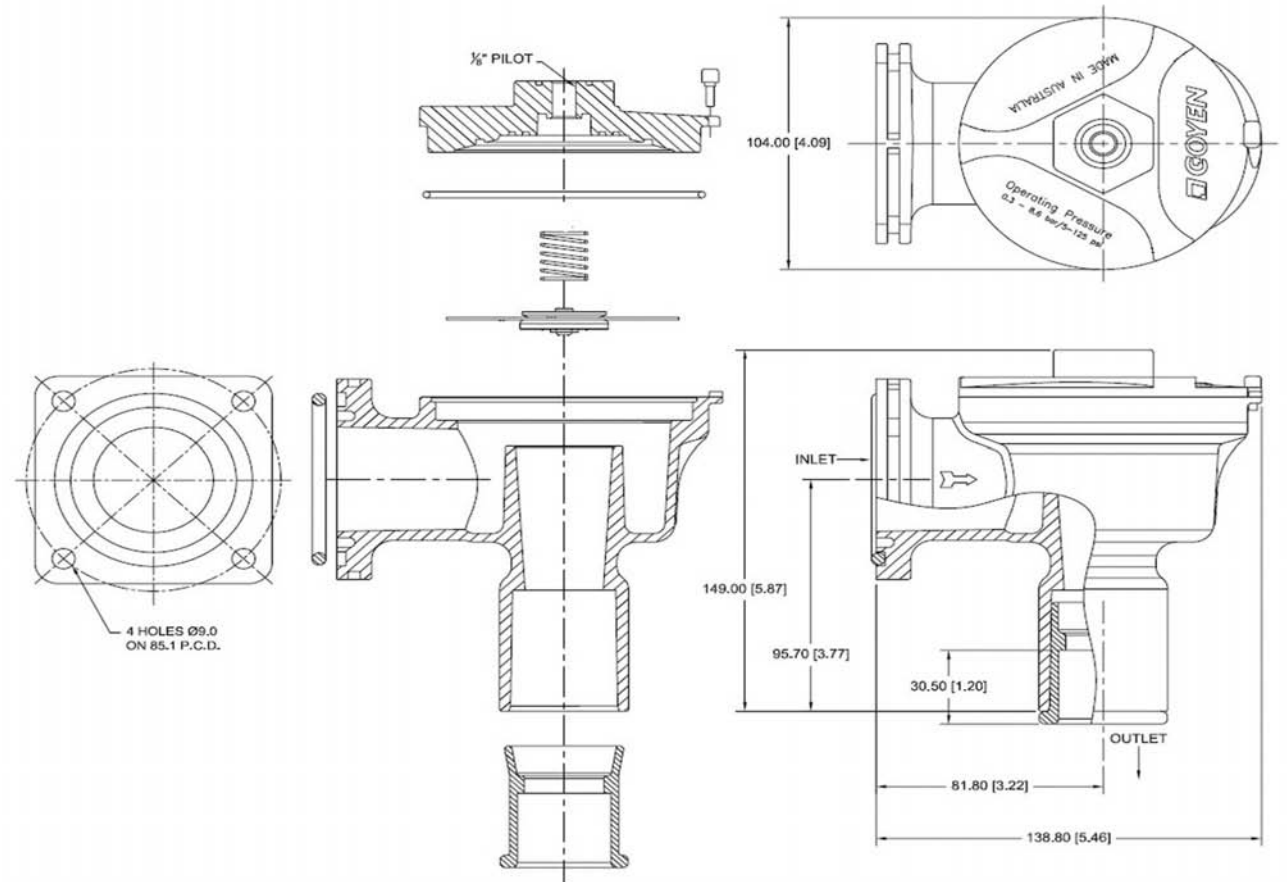
RCAC25T3



RCAC25DD3



RCAC25FS3





# 'T' SERIES

## PULSE JET VALVES



T Series

### DESCRIPTION

High performance diaphragm valve with threaded ports. Available with integral pilot or as remotely piloted valve. Outlet at 90° to inlet.

### SUITABLE FOR

Dust collector applications, in particular for reverse pulse jet filter cleaning including bag filters, cartridge filters, envelope filters, ceramic filters, and sintered metal fibre filters.

### CONSTRUCTION

**Body:** Aluminium (diecast)

**Ferrule:** 304 SS

**Armature:** 430FR SS

**Seals:** Nitrile or Viton (reinforced)

**Spring:** 304 SS

**Screws:** 302 SS

**Diaphragm Seat:** PA-6 (standard), Viton coated mild steel or High Density PE

Refer to Q Series Solenoid product data sheet for solenoid construction details.

### OPERATION

**Recommended**

**on time range:** 50–500 ms

**Recommended time**

**between pulses:** 1 minute or greater

### MAINTENANCE

Before conducting any maintenance activity on the system ensure that components are fully isolated from pressure and power supplies. Pressure and power should not be reapplied until the valve has been fully assembled.

Diaphragm and pilot inspection should be conducted annually.

### APPROVALS

- Atex II 2D Mechanical
- CSA (U.S) C22.2 No 139–1982, UL 429 (CA & RCA)
- C-Tick (CA)
- EMC 2004/108/EC (CA)
- Low Voltage Directive 2006/95/EC (CA)

### INSTALLATION

1. Prepare supply and blowtube pipes to suit valve specification. Avoid installing valves underneath the tank.
2. Ensure tank and pipes are free from dirt, rust or other particulate.
3. Ensure supply air is clean and dry.
4. Mount valves to inlet pipes and blowtube to valves, ensuring no excess thread sealant can enter the valve itself.
5. Make electrical connections to solenoid or connect RCA pilot port to pilot valve (RCA valves only).
6. Apply moderate pressure to system and check for installation leaks.
7. Fully pressurise system.
8. Test fire and listen for proper actuation and crisp pulse noise.

### WEIGHTS

SIZE	INTEGRAL PILOT (CA) KG (LBS)	REMOTE PILOT (RCA) KG (LBS)	SIZE	INTEGRAL PILOT (CA) KG (LBS)	REMOTE PILOT (RCA) KG (LBS)
10	NA	0.06 (0.14)	45	1.50 (3.30)	1.28 (2.83)
20	0.60 (1.31)	0.38 (0.83)	50	2.89 (6.38)	2.68 (5.92)
25	0.73 (1.61)	0.51 (1.13)	62	3.31 (7.30)	3.09 (6.82)
35	1.04 (2.28)	0.83 (1.83)	76	4.77 (10.52)	4.56 (10.04)

### MAINTENANCE KITS

MODEL	NITRILE	VITON	LOW TEMPERATURE -60°C (-76°F) MIN.	INCLUDES
RCA10T	K1001	K1002	NA	Diaphragm kits include main and secondary diaphragms (where required) and all springs. *These kits are for discontinued valves.
CA/RCA20T	K2000	K2007	NA	
CA/RCA25T	K2501	K2503	K2504	
CA/RCA32T*	K2500	—	NA	
CA/RCA35T	K3500	K3501	K3502	
CA/RCA40T*	K4000	—	NA	o-ring, armature assembly, armature spring, ferrule
CA/RCA45T	K4502	K4503	K4522	
CA/RCA50/62T	K5004	K5000	NA	
CA/RCA76T	K7600	K7601	NA	
Pilot repair kit	K0380	K0384	NA	

### PRODUCT CHARACTERISTICS AND PERFORMANCE

NOM. SIZE	PORT SIZE		NUMBER OF DIAPHRAGMS	KV	FLOW	
	MM	IN			CV	
10	10	3/8	1	2.5	2.9	
20	20	3/4	1	12	14	
25	25	1	1	20	23	
35	40	1.5	1	36	42	
45	40	1.5	2	44	51	
50	50	2	2	76	88	
62	62	2.5	2	91	106	
76	76	3	2	144	167	

**Pressure Range:** 30(5)–860(125) kPa(Psi)

**Temperature Range:** Nitrile Seals: -40°C (-40°F) to 82°C (179.6°F)  
Viton Seals: -29°C (-20.2°F) to 232°C (449.6°F)

ORDER CODE

		T				-		Solenoid type	Solenoid order code, drop 'the K-' Refer to Q Series Solenoid product specification
								Diaphragm material	0=nitrile, 1=viton
								Thread type	0=NPT, 1=RC, 2=G
								Pilot size	0=1/8", 1=1/4"
								Valve size	20, 25, 35*, 45*, 50, 62, 76 mm
								Pilot type	RCA=remotely piloted, CA=integral pilot

\*Note that the 35 & 45 share the same port sizes.

Order Code RCA10T Series

RCA10-6T/645 [1/4 NPT]

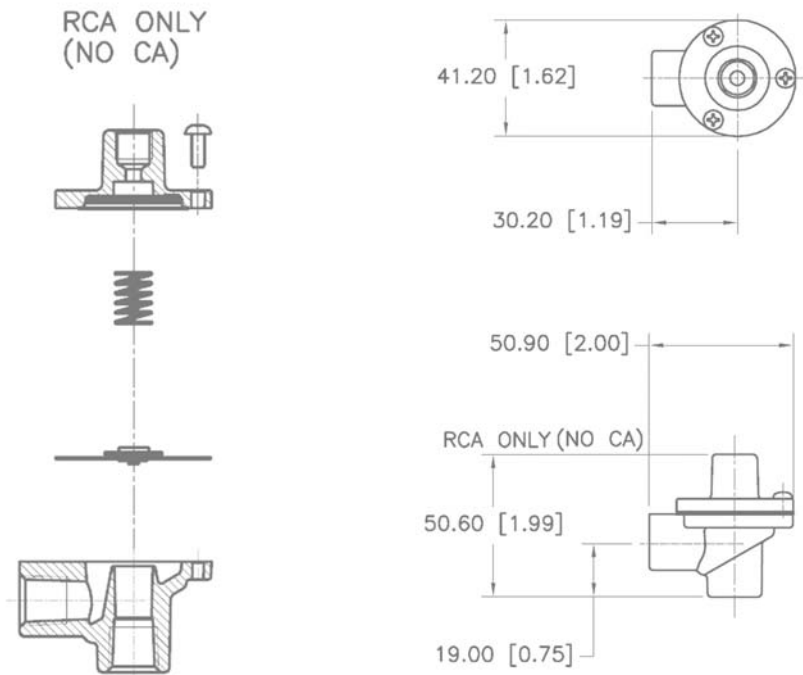
RCA10-6T/669 [1/4 BSPT]

Examples: CA50T010-300  
2" threaded port valve with 1/8" pilot, 2" RC port threads, nitrile seals and 200/240 VAC integral pilot with DIN socket terminals.  
RCA25T001  
1" threaded port valve with 1/8" NPT remote pilot port, 1" NPT port threads and viton seals.

DIMENSIONS

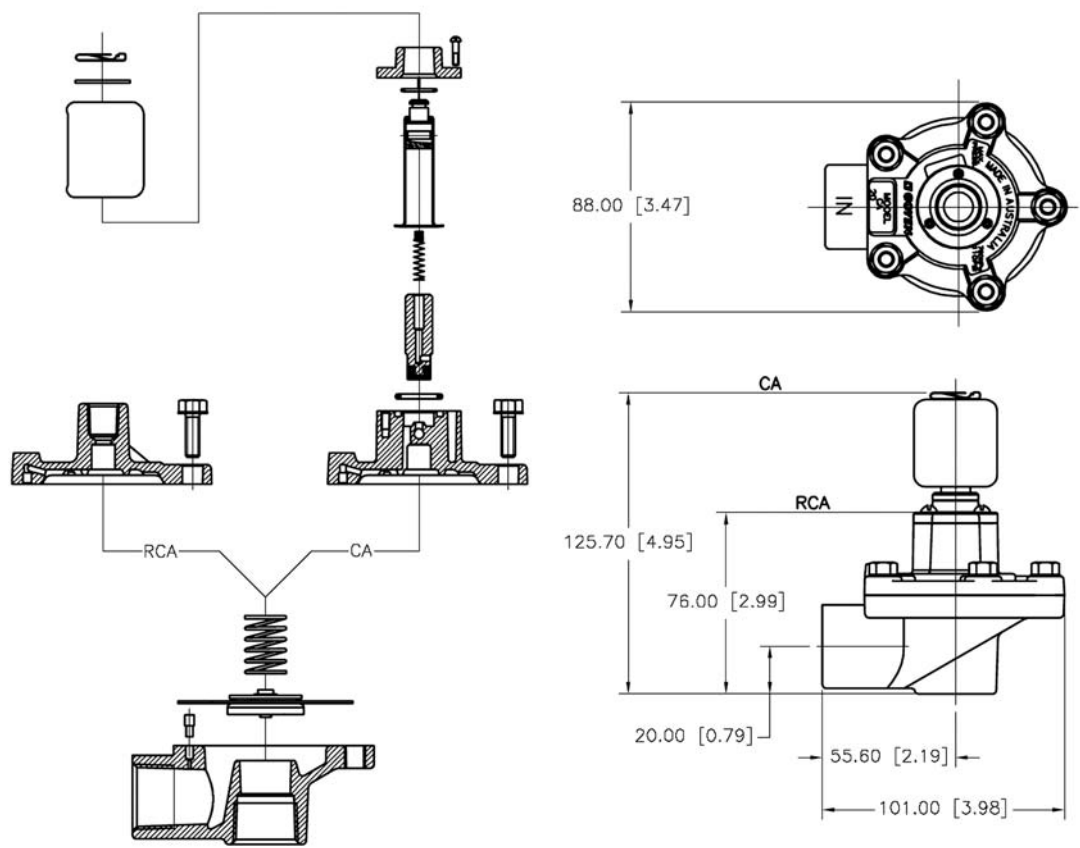
(Dimensions in mm and [inches])

RCA10T

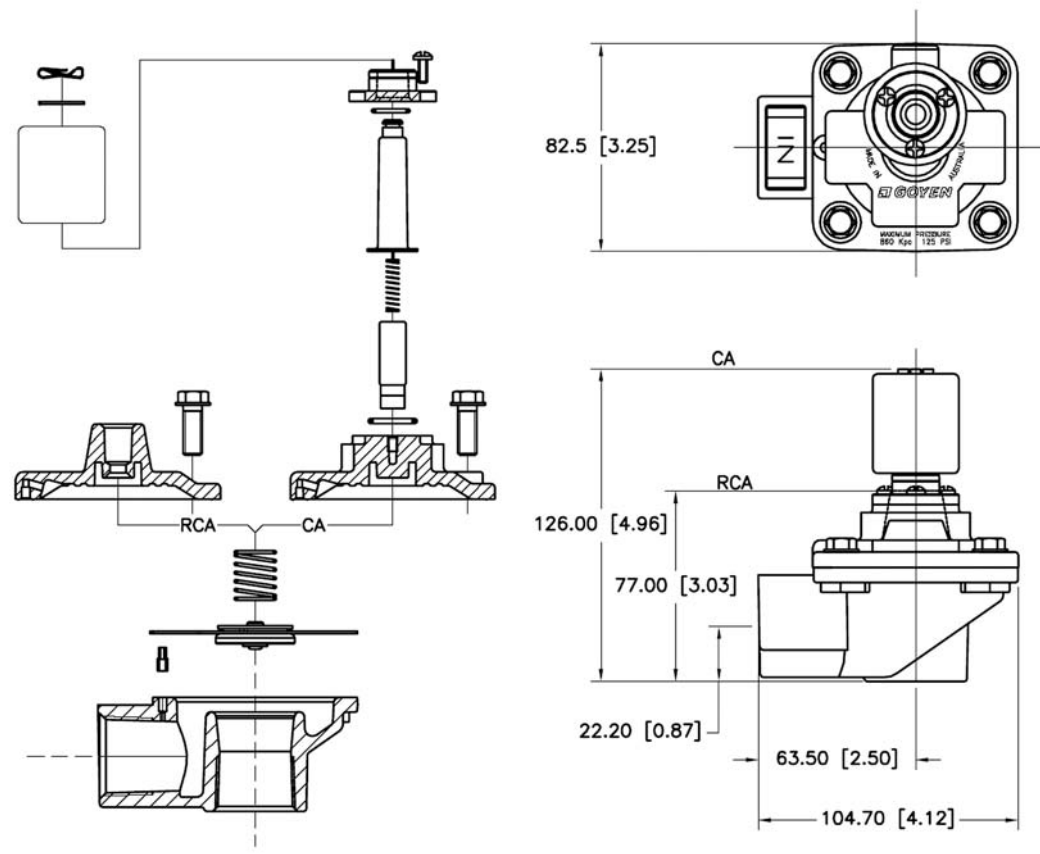




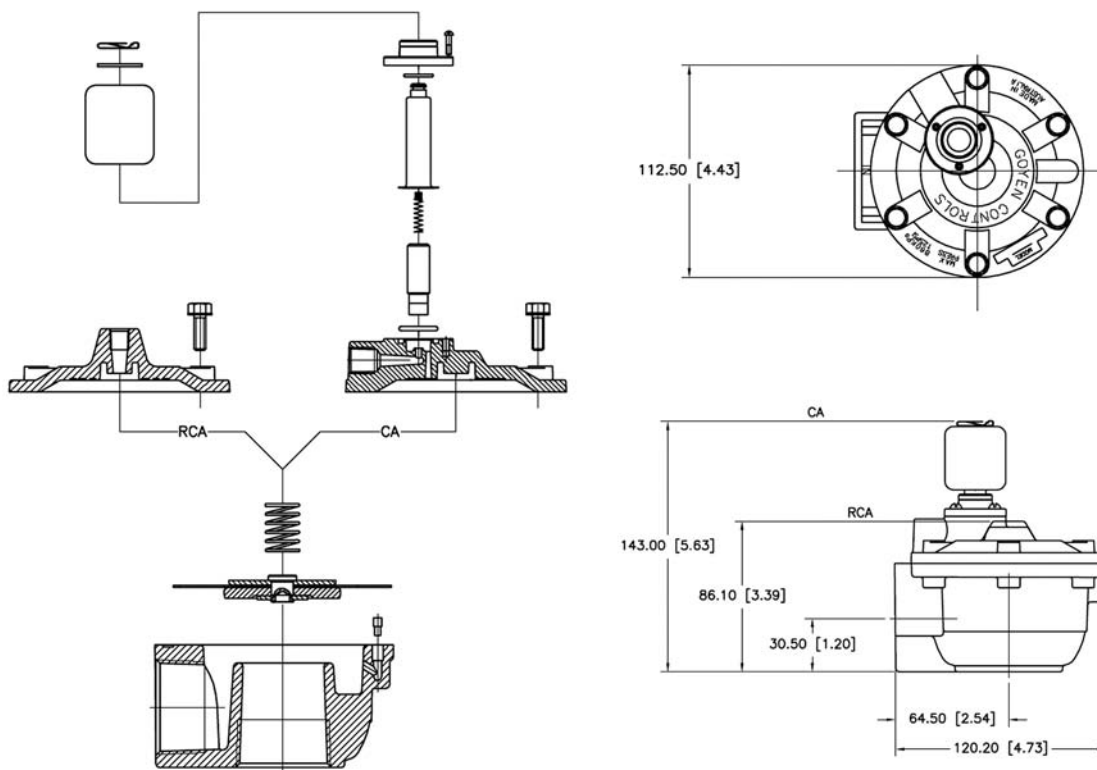
CA/RCA20T



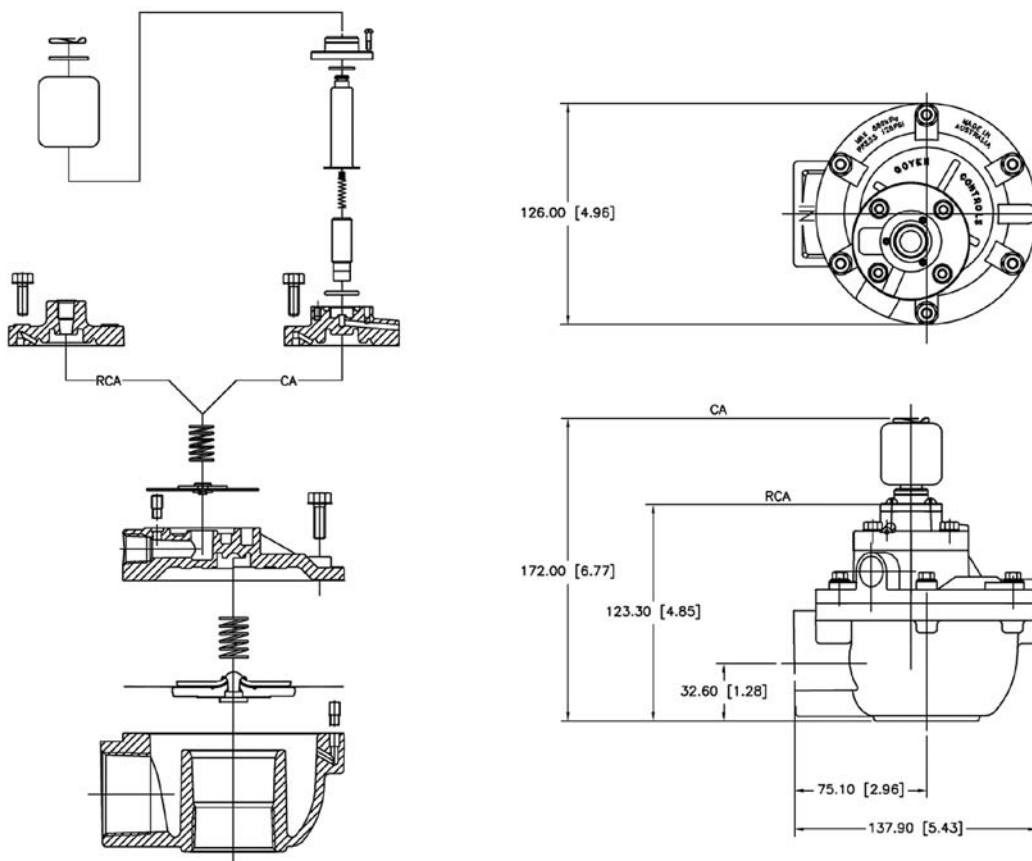
CA/RCA25T



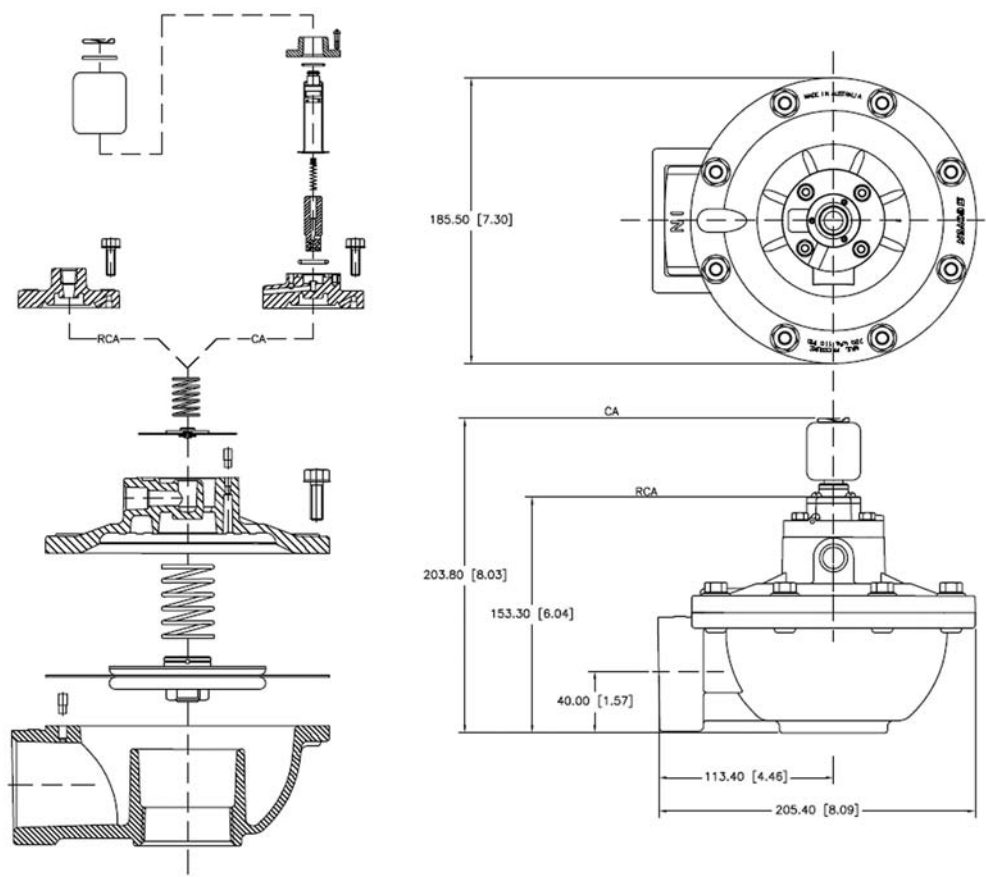
## CA/RCA35T



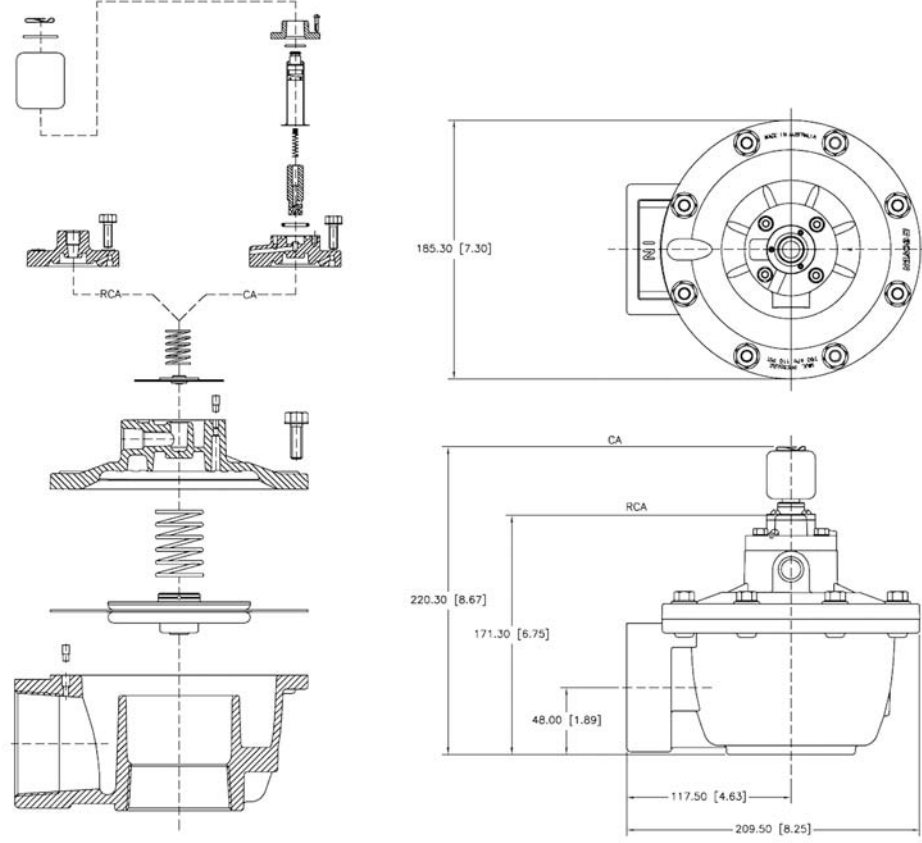
## CA/RCA45T



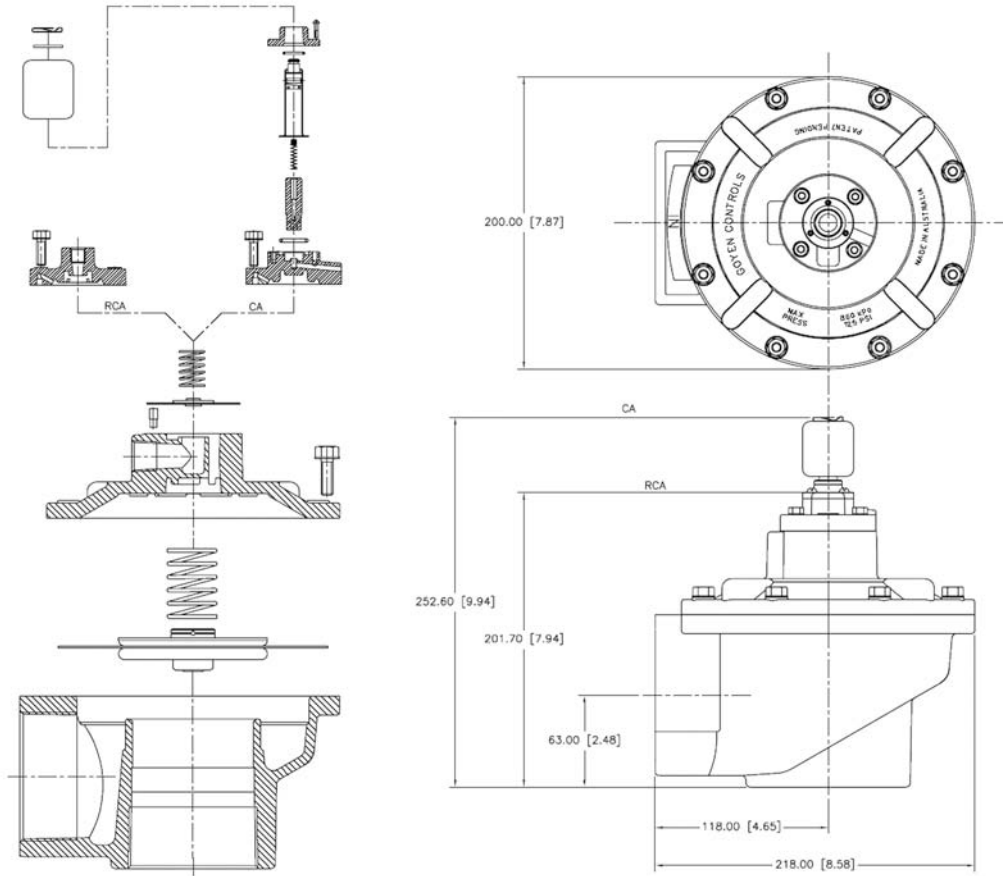
CA/RCA50T



CA/RCA62T



# CA/RCA76T



# 'DD' SERIES

## PULSE JET VALVES



DD Series

### DESCRIPTION

High performance diaphragm valve with dresser nut ports. Available with integral pilot or as remotely piloted valve. Outlet at 90° to inlet.

### SUITABLE FOR

Dust collector applications, in particular for reverse pulse jet filter cleaning and its variations including bag filters, cartridge filters, envelope filters, ceramic filters, and sintered metal fibre filters.

### CONSTRUCTION

**Body and Dresser**

**Nuts:** Aluminium (diecast)

**Ferrule:** 304 SS

**Armature:** 430FR SS

**Seals:** Nitrile or Viton (reinforced)

**Spring:** 304 SS

**Screws:** 302 SS

**Dresser Nut Seals:** Nitrile or Viton

**Diaphragm Seat:** PA-6 (standard), Viton coated mild steel or High Density PE

Refer to Q Series Solenoid product data sheet for solenoid construction details.

### OPERATION

**Recommended**

**on time range:** 50–500 ms

**Recommended time**

**between pulses:** 1 minute or greater

### MAINTENANCE

Before conducting any maintenance activity on the system ensure that components are fully isolated from pressure and power supplies. Pressure and power should not be reapplied until the valve has been fully assembled.

Diaphragm and pilot inspection should be conducted annually.

### APPROVALS

- Atex II 2D Mechanical (RCA Only)
- CSA (U.S) C22.2 No 139–1982, UL 429 (CA & RCA)

- C-Tick (CA)
- EMC 2004/108/EC (CA)
- Low Voltage Directive 2006/95/EC (CA)

### INSTALLATION

For your safety do not pressurise system until all valves and pipes are fully secured. Do not attempt to remove a fitted valve while system is under pressure.

1. Prepare supply and blowtube pipes\* to suit valve specification. Avoid installing valves underneath the tank.
2. Ensure tank and pipes are free from dirt, rust or other particulate.
3. Ensure supply air is clean and dry.

4. Mount valve to inlet pipes and blowtube to valve, tighten dresser nut.
5. Tanks and pipes must be independently restrained from valve.
6. Make electrical connections to solenoid or connect RCA pilot port to pilot valve (RCA valves only).
7. Apply moderate pressure to system and check for installation leaks.
8. Fully pressurise system.
9. Test fire and listen for proper actuation and crisp pulse noise.

**Valve is not a structural component. Do not rely on valve to retain tanks or pipe.**

\*Pipes must be to Schedule 40 outside diameter

SCHEDULE 40 SIZE	OD MM	OD INCHES
3/4"	26.7	1.050
1"	33.4	1.315
1.5"	48.3	1.900

### WEIGHTS

SIZE	INTEGRAL PILOT (CA) KG (LBS)	REMOTE PILOT (RCA) KG (LBS)
20	0.82 [1.80]	0.61 [1.34]
25	1.21 [2.67]	0.99 [2.18]
45	2.28 [5.03]	2.11 [4.65]

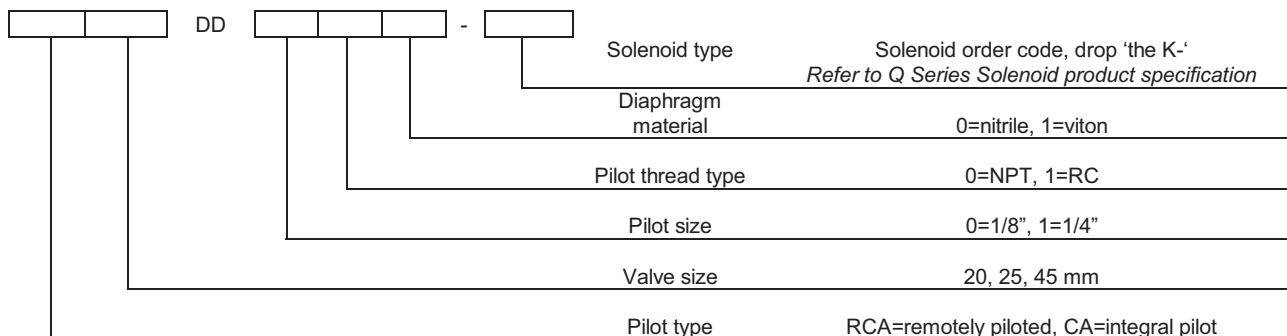
### MAINTENANCE KITS

MODEL	NITRILE	VITON	LOW TEMPERATURE –60°C (–76°F) MIN.	INCLUDES
Diaphragm Kit				
CA/RCA20DD	K2000	K2007	NA	Diaphragm kits include main and secondary diaphragms (where required) and all springs.
CA/RCA25DD	K2501	K2503	K2504	
CA/RCA45DD	K4502	K4503	K4522	
Dresser Seal Kit				
CA/RCA20DD	K2008	K2009	NA	1 dresser seal, 1 dresser nut, 1 seal retainer
CA/RCA25DD	K2508	K2507	NA	1 dresser seal, 1 dresser nut, 1 seal retainer
CA/RCA45DD	K4510	K4511	NA	1 dresser seal, 1 dresser nut, 1 seal retainer
Pilot repair kit (suits all CA valves)	K0380	K0384	NA	o-ring, armature assembly, armature spring, ferrule

## PRODUCT CHARACTERISTICS AND PERFORMANCE

NOM. SIZE	PORT SIZE		NUMBER OF DIAPHRAGMS	FLOW		PRESSURE RANGE	TEMPERATURE RANGE °C °(F)	
	MM	IN		KV	CV		NITRILE SEALS	VITON SEALS
20	20	3/4	1	12	14	30(5)–860(125)	–40(–40) to 82(179.6)	–29(–20.2) to 232(449.6)
25	25	1	1	20	23	30(5)–860(125)	–40(–40) to 82(179.6)	–29(–20.2) to 232(449.6)
45	40	1.5	2	44	51	30(5)–860(125)	–40(–40) to 82(179.6)	–29(–20.2) to 232(449.6)

## ORDER CODE

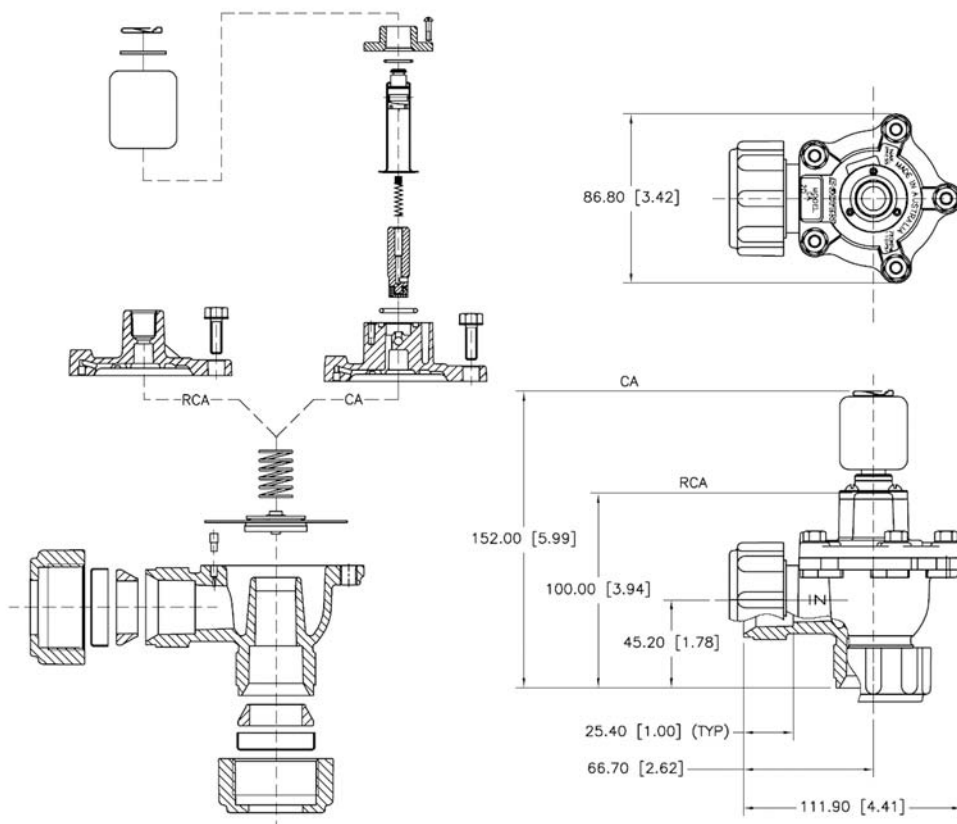


Examples: CA45DD010-300  
 1.5" dresser nut port valve with 1/8" RC pilot, nitrile seals and 220/240 VAC integral pilot with DIN socket terminals.  
 RCA25DD001  
 1" dresser nut port valve with 1/8" NPT remote pilot port and viton seals.

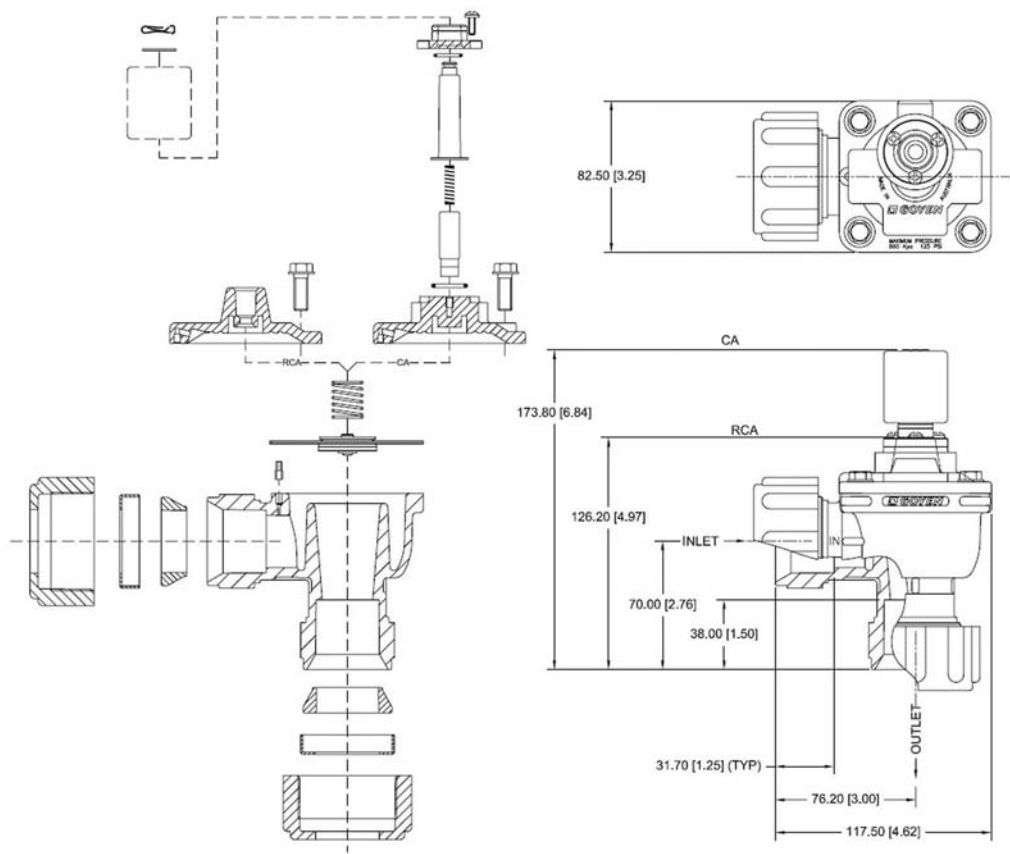
## DIMENSIONS

(Dimensions in mm and [inches])

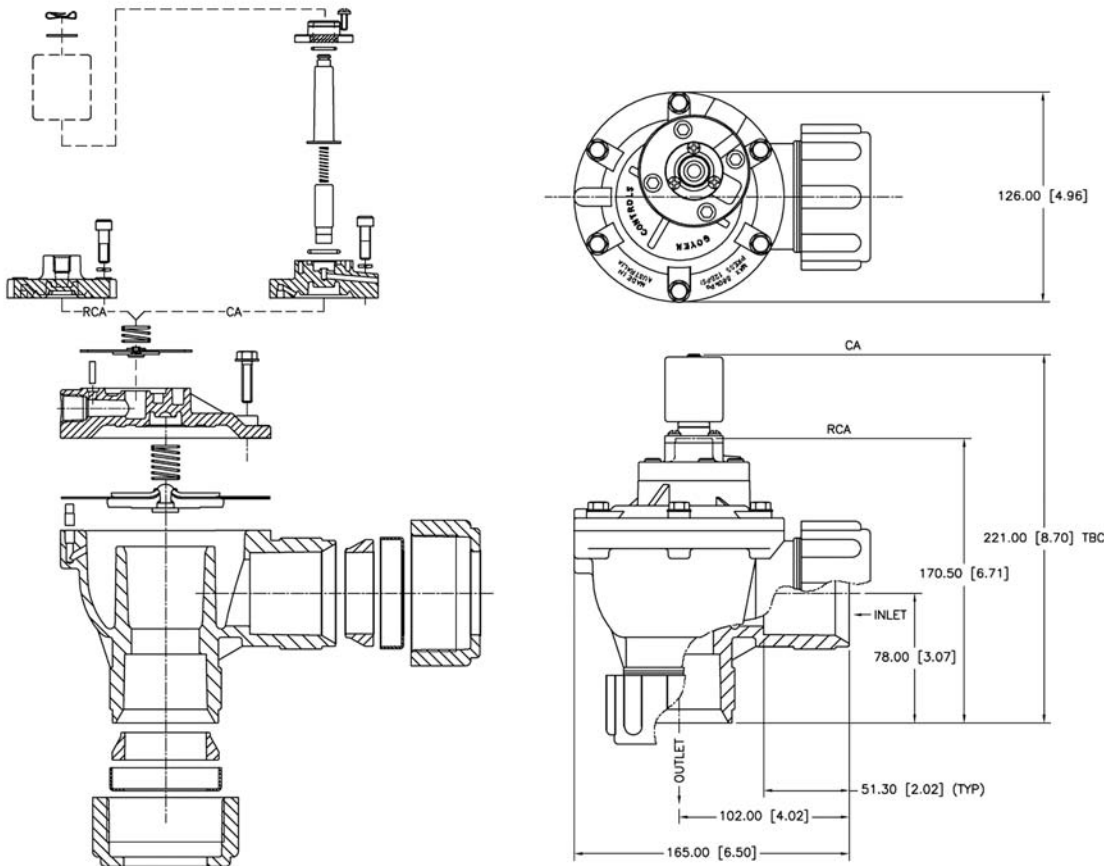
### CA/RCA20DD



CA/RCA25DD



CA/RCA45DD





# 'FS' SERIES

## PULSE JET VALVES



FS Series

### DESCRIPTION

Very high performance diaphragm valve with flanged inlet port and slide seal outlet port for easy valve installation and removal. Available with integral pilot or as remotely piloted valve. Outlet at 90° to inlet.

### SUITABLE FOR

Dust collector applications, in particular for reverse pulse jet filter cleaning including bag filters, cartridge filters, envelope filters, ceramic filters, and sintered metal fibre filters.

### CONSTRUCTION

**Body:** Diecast aluminium or 316 stainless steel

**Ferrule:** 304 SS

**Armature:** 430FR SS

**Seals:** Nitrile or Viton (reinforced)

**Spring:** 304 SS

**Screws:** 302 SS

**Outlet Slide Seal:** EPDM or Viton

**Diaphragm Seat:** PA-6 (standard), Viton coated mild steel

Refer to Q Series Solenoid product data sheet for solenoid construction details.

### OPERATION

**Recommended**

**on time range:** 50–500 ms

**Recommended time**

**between pulses:** 1 minute or greater

### MAINTENANCE

Before conducting any maintenance activity on the system ensure that components are fully isolated from pressure and power supplies. Pressure and power should not be reapplied until the valve has been fully assembled.

Diaphragm and pilot inspection should be conducted annually.

### APPROVALS

- Atex II 2D Mechanical (RCA Only)
- CSA (U.S) C22.2 No 139–1982, UL 429 (CA & RCA)
- C-Tick (CA)

- EMC 2004/108/EC (CA)
- Low Voltage Directive 2006/95/EC (CA)

### INSTALLATION

1. Prepare inlet flange and blowtube pipes\* to suit valve specification. Avoid installing valves underneath the tank.
2. Ensure tank and pipes are free from dirt, rust or other particulate.
3. Ensure supply air is clean and dry.
4. Mount valves to inlet flange and blowtube to valves with all seals in place. Tighten flange bolts to 10Nm (7.4 ft-lbs) Ensure blowtube is pushed all the way into the valve outlet.

5. Tanks and pipes must be independently restrained from valve.
6. Make electrical connections to solenoid or connect RCA pilot port to pilot valve (RCA valves only).
7. Apply moderate pressure to system and check for installation leaks.
8. Fully pressurise system.
9. Test fire and listen for proper actuation and crisp pulse noise.

**Valve is not a structural component. Do not rely on valve to retain tanks or pipe.** Refer to Camlock product specification for installation details.

SCHEDULE 40 SIZE	OD MM	OD INCHES
1"	33.4	1.315
1.5"	48.3	1.900

### WEIGHTS

SIZE	INTEGRAL PILOT (CA) KG (LBS)	REMOTE PILOT (RCA) KG (LBS)
25	1.050 (2.31)	0.830 (1.82)
45	1.830 (4.03)	1.610 (3.55)

### MAINTENANCE KITS

MODEL	NITRILE	VITON	INCLUDES
CAC/RCAC25FS Diaphragm kit CA/RCA45FS Diaphragm kit	K2501 K4502	K2503 K4503	The main diaphragm, secondary diaphragm (45FS only) and spring(s).
CAC45FS to CA45FS Integral pilot cover conversion kit	K4532(NPT) K4538(BSP)	K4537(NPT) K4539(BSP)	The complete CA integrally piloted valve cover assembly. Does not include main diaphragm, main diaphragm spring, cover bolts or main bleed pin.
RCAC45FS to RCA45FS Remote pilot cover conversion kit	K4533(BSP) K4535(NPT)	K4534(BSP) K4536(NPT)	The complete RCA remotely piloted valve cover assembly with main diaphragm and spring. Does not include cover bolts or main bleed pin.
Integral pilot repair kit (CA45FS and CAC25FS only)	K0380	K0384	O-ring armature assembly, armature spring, ferrule.
Integral pilot repair kit (CAC45FS only)	K0390	N/A	O-ring armature assembly, armature spring, ferrule.
25FS Outlet seal	G690763	G690763-2	Outlet seal
45FS Outlet seal	G690864	G690864-2	Outlet seal

## PRODUCT CHARACTERISTICS AND PERFORMANCE

NOM. SIZE	PORT SIZE		NUMBER OF DIAPHRAGMS	FLOW		PRESSURE RANGE	TEMPERATURE RANGE °C °(F)	
	MM	IN		KV	CV		NITRILE SEALS	VITON SEALS
25	25	1	1	28	32	30(5)–860(125)	–40(–40) to 82(179.6)	–29(–20.2) to 232(449.6)
45	40	1.5	1	56	65	30(5)–860(125)	–40(–40) to 82(179.6)	–29(–20.2) to 232(449.6)

## ORDER CODE

FS	0	-						
				Solenoid type		Solenoid order code, drop 'the K-' Refer to Q Series Solenoid product specification		
				Diaphragm		0=nitrile, 1=viton		
				Pilot thread type		0=NPT, 1=RC, 9=NPT & stainless steel valve body		
				Valve size		25, 45 mm		
				Pilot type		25 RCAC=remotely piloted, CAC= integral pilot 45 RCA=remotely piloted, CA=integral pilot		

Examples: CA45FS010-300

1.5" FS valve with 1/8" RC pilot, nitrile seals and 220/240 VAC integral pilot with DIN socket terminals.

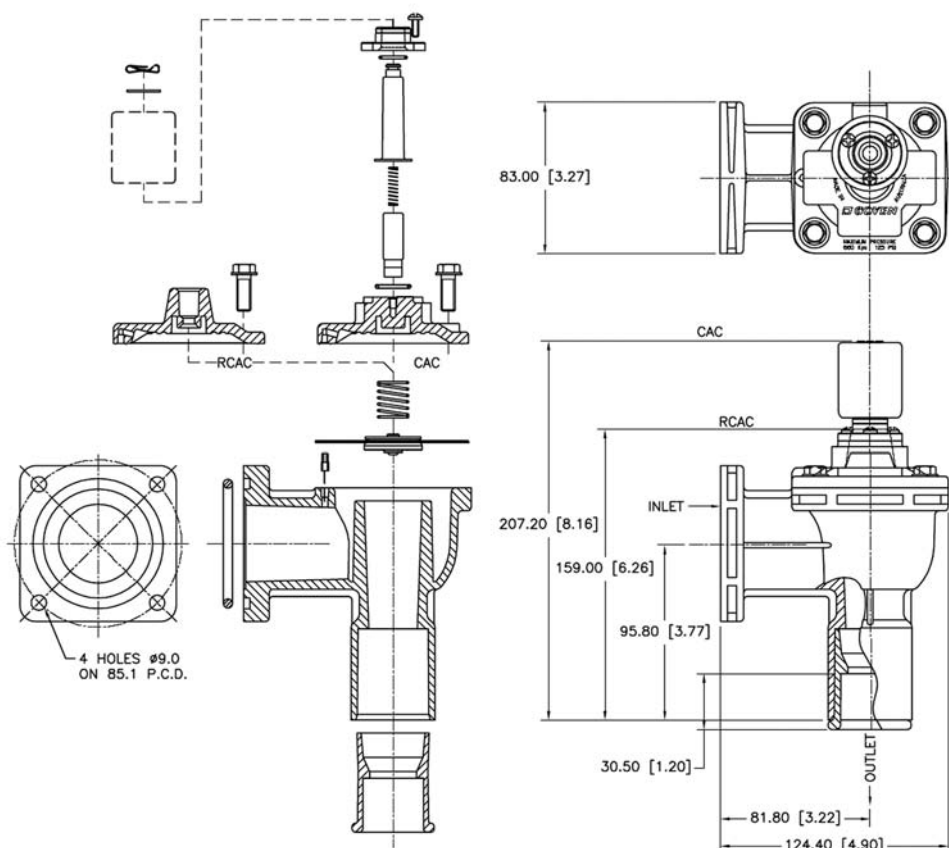
RCAC25FS091

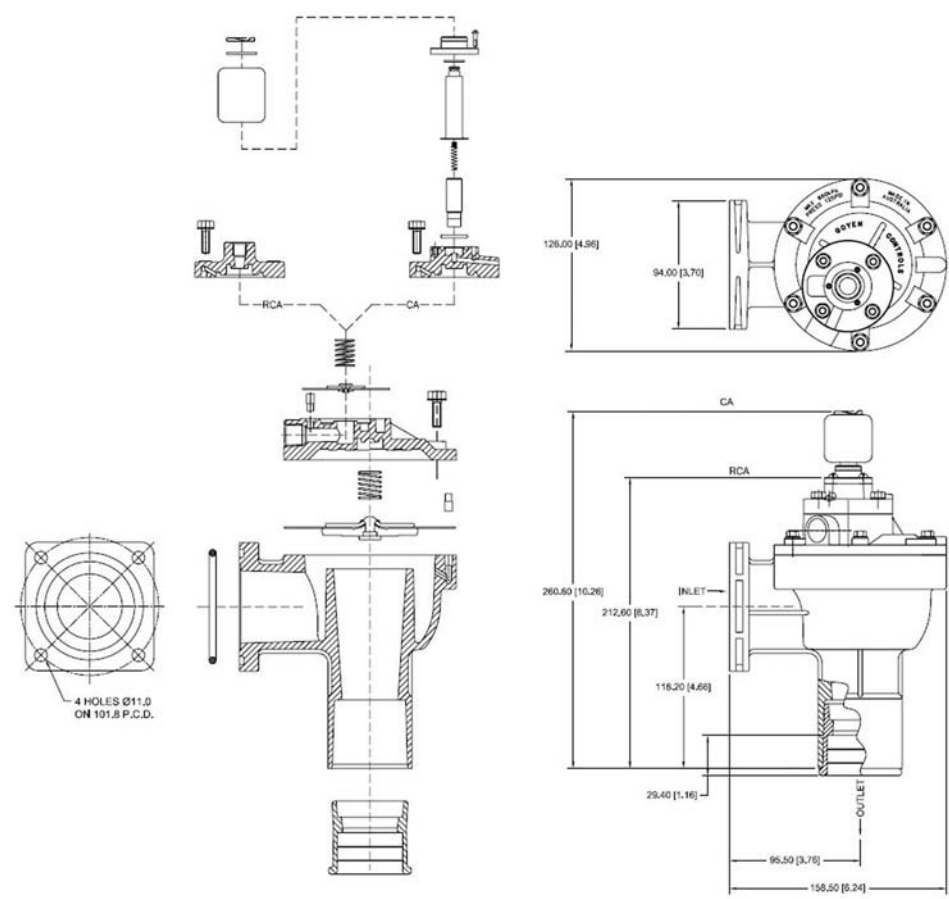
1" FS valve with 1/8" NPT remote pilot port, stainless steel body and valve cover, and viton seals.

## DIMENSIONS

(Dimensions in mm and [inches])

### CAC/RCAC25FS





# 'MM' SERIES PULSE JET VALVES



MM Series

## DESCRIPTION

Very high performance diaphragm valve designed to be mounted directly into the compressed air manifold. 1" and 1.5" models are supplied with outlet pipes to length specified, 3" and 3.5" models are supplied without outlet pipes.

## SUITABLE FOR

Dust collector applications, in particular for reverse pulse jet filter cleaning including bag filters, cartridge filters, envelope filters, ceramic filters, and sintered metal fibre filters.

## CONSTRUCTION

**Body and Dresser**

**Nuts:** Diecast Aluminium

**Ferrule:** 304 SS

**Armature:** 430FR SS

**Diaphragm and Seals:** Nitrile or Viton (reinforced)

**Spring:** 304 SS

**Screws:** 302 SS

**Outlet Pipe:** Schedule 40 wrought steel zinc passivated

**Diaphragm Seat:** PA-6 [25 & 40MM standard], Nitrile coated mild steel [76MM standard], or Viton coated mild steel [all sizes]

Refer to Q Series Solenoid product data sheet for solenoid construction details.

## OPERATION

**Recommended**

**on time range:** 50–500 ms

**Recommended time**

**between pulses:** 1 minute or greater

## MAINTENANCE

Before conducting any maintenance activity on the system ensure that components are fully isolated from pressure and power supplies. Pressure and power should not be reapplied until the valve has been fully assembled.

Diaphragm and pilot inspection should be conducted annually.

## APPROVALS

- Atex II 2D Mechanical (RCA Only)
- CSA (U.S) C22.2 No 139-1982, UL 429 (CA & RCA)
- C-Tick (CA)
- EMC 2004/108/EC (CA)
- Low Voltage Directive 2006/95/EC (CA)

## INSTALLATION

1. MM valves are installed through the tank, refer to the appropriate template listed above.
2. To avoid any potential operational problems it is preferable that the valves are not mounted underneath the tank where condensation may collect. All o-rings should be coated with a silicone based lubricant or similar.
3. Dresser nut seals where used are a pressure seal only, not a structural component. Do not rely on dresser seals to retain either the tanks or blowtubes. Tanks and blowtubes must be independently restrained.
4. Tighten dresser nuts to 20 Nm (15 ftlbs) max.
5. Tighten pipe outlets to 20 Nm (15 ftlbs).
6. Connect to Goyen pilot valve, if remotely actuated.
7. Ensure compressed air supply is dry and free from oil and dirt.
8. Check all cleaning system components are secure before applying pressure.
9. Apply moderate pressure and check for leaks.
10. Fully pressurise system.
11. Test fire and listen for proper actuation and crisp pulse noises.

## WEIGHTS

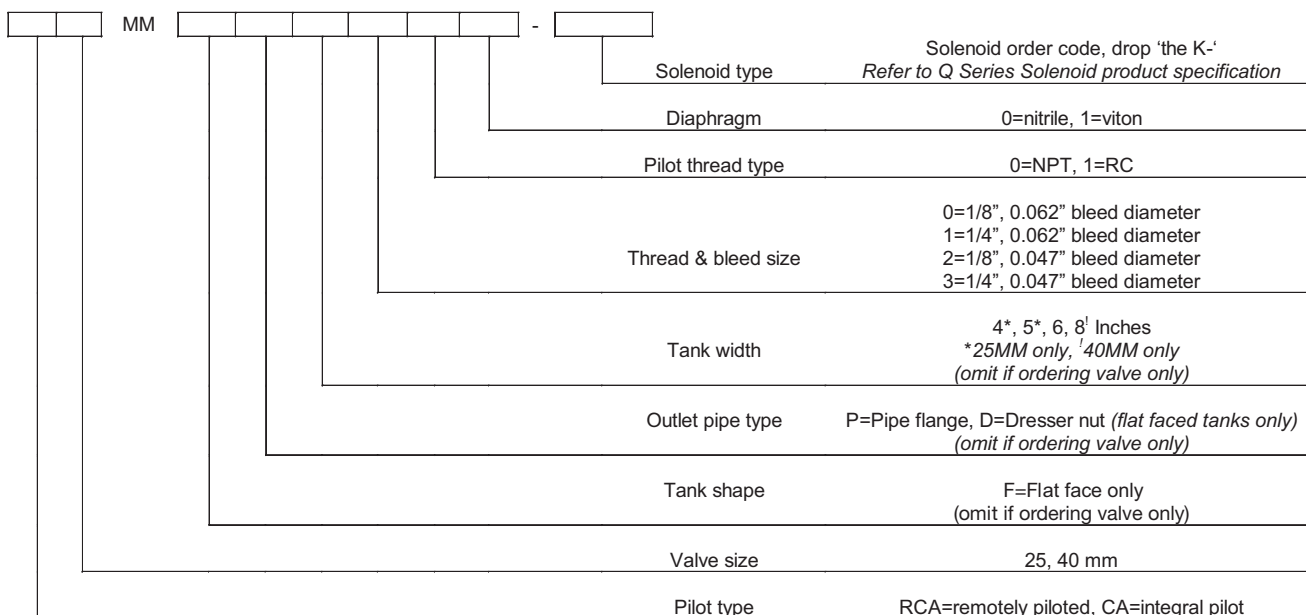
SIZE	INTEGRAL PILOT (CA) KG (LBS)	REMOTE PILOT (RCA) KG (LBS)
25	0.720 (1.59)	0.500 (1.10)
40	1.120 (2.47)	0.900 (1.98)
76	3.900 (8.60)	3.680 (8.11)
102	3.900 (8.60)	3.680 (8.11)

## MAINTENANCE KITS AND ACCESSORIES

MODEL	NITRILE	VITON	INCLUDES
CA/RCA25MM Diaphragm kit	K2501	K2503	Diaphragm kits include main and secondary (where required)
CA/RCA40MM Diaphragm kit	K4000	K4007	diaphragms and all diaphragm springs
CA/RCA76MM Diaphragm kit	K7600	K7601	
CA/RCA102MM Diaphragm kit	K10200	K10201	
Pilot repair kit (all models)	K0380	K0384	o-ring, armature assembly, armature spring, ferrule
CA/RCA25MM*P Installation template	Drawing 690048		Installation templates are available free of charge.
CA/RCA25MM*D Installation template	Drawing 690046		
CA/RCA40MM*P Installation template	Drawing 690045		
CA/RCA40MM*D Installation template	Drawing 609999		
CA/RCA76MM Installation template	Drawing 690151 and 690051		
CA/RCA102MM Installation template	Drawing 691055 and 691056		Suitable for 102MM hose

NOM. SIZE	PORT SIZE		NUMBER OF DIAPHRAGMS	FLOW		PRESSURE RANGE	TEMPERATURE RANGE °C °(F)	
	MM	IN		KV	CV	KPA(PSI)	NITRILE SEALS	VITON SEALS
25	25	1	1	26	30	30(5)–860(125)	–40(–40) to 82(179.6)	–29(–20.2) to 232(449.6)
40	40	1.5	2	44	51	30(5)–860(125)	–40(–40) to 82(179.6)	–29(–20.2) to 232(449.6)
76	76	3	2	200	233	30(5)–860(125)	–40(–40) to 82(179.6)	–29(–20.2) to 232(449.6)
102	102	3.5	2	238	277	30(5)–860(125)	–40(–40) to 82(179.6)	–29(–20.2) to 232(449.6)

### 1" and 1.5" Models



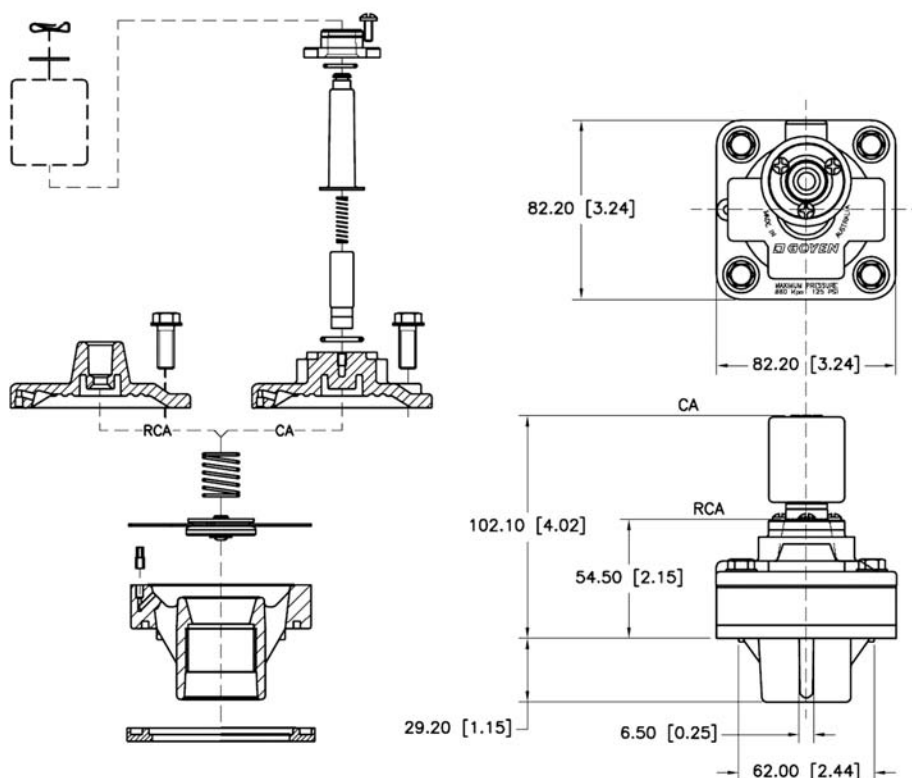
Q Series Solenoid Valve Model Number	
MM	
	Solenoid type <i>Refer to Q Series Solenoid product specification</i>
	Diaphragm 0=nitrile, 1=viton
	Thread type 0=NPT, 1=RC, 4=Universal Pipe Thread <i>(specify 4 for CA Models)</i>
	Remote pilot size 0=1/8", 1=1/4" <i>specify 0 for CA models</i>
	Valve size 76,102 mm
	Pilot type RCA=remotely piloted, CA=integral pilot

20

## DIMENSIONS

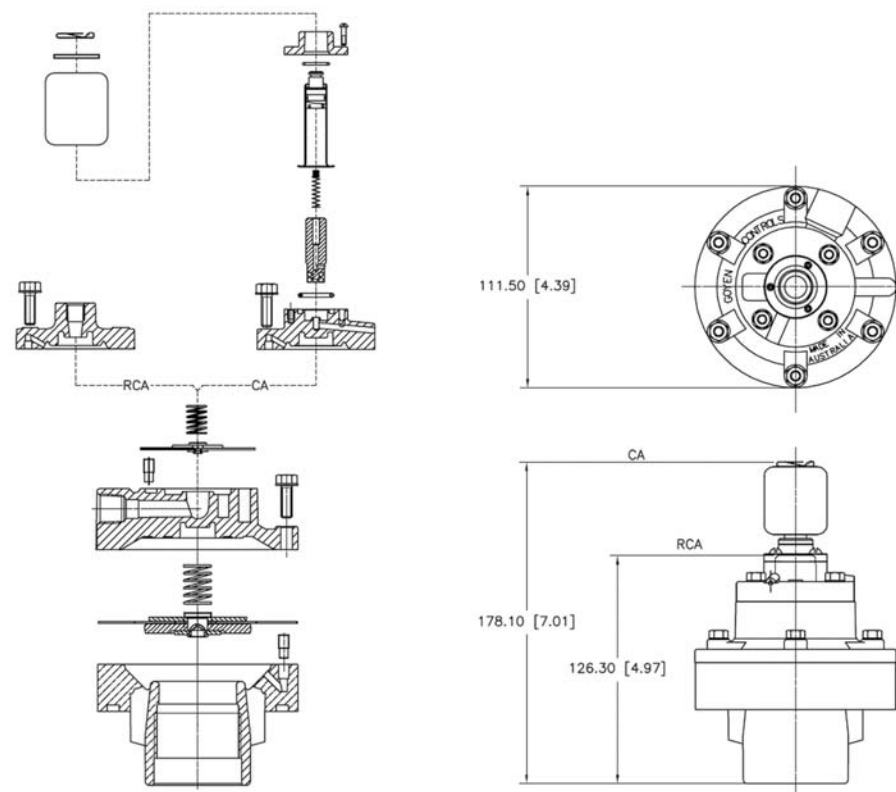
[Dimensions in mm and [inches]]

### CA/RCA25MM



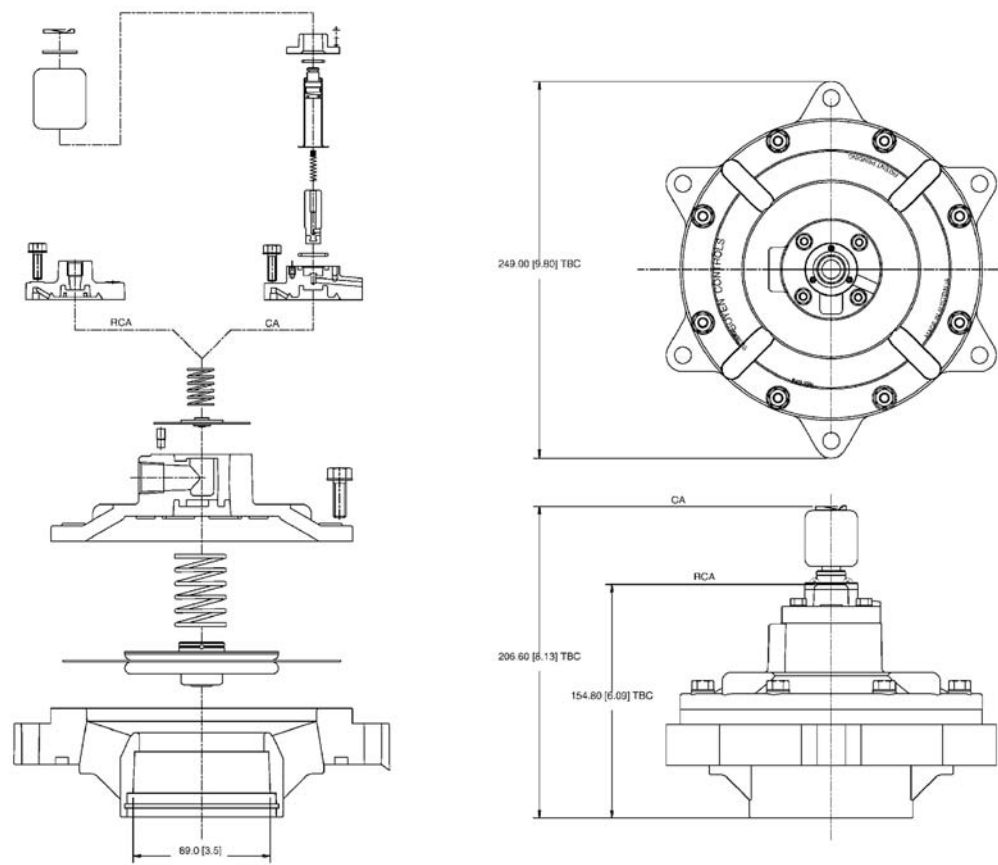
Note: Pipe outlet not shown

### CA/RCA40MM



Note: Pipe outlet not shown

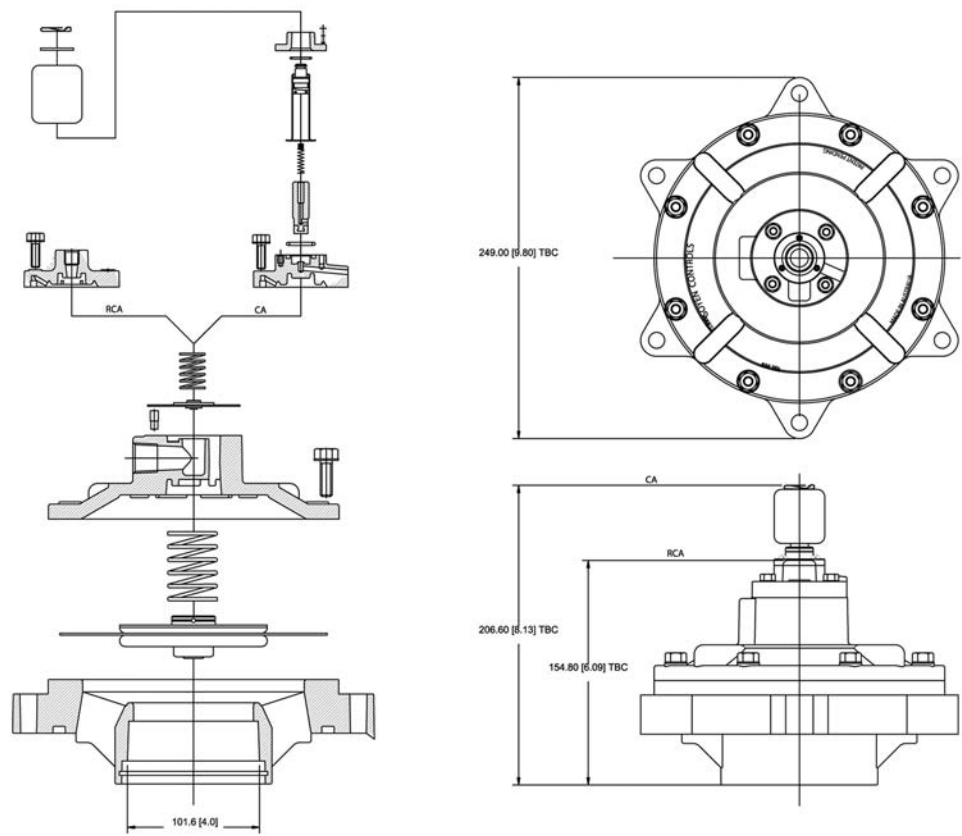
CA/RCA76MM



Note: Suggested pipe size is 3" NB Schedule 40 pipe (OD=89.0mm, 3.5")



CA/RCA102MM



Note: Suggested pipe size is 3.5" NB Schedule 30 pipe (OD=101.6mm, 4")

## **AUSTRALIA**

### **New South Wales – Head Office**

268–292 Milperra Rd  
Milperra NSW 2214  
Phone: +61 1800 805 372  
Fax: +61 1300 658 799

### **Queensland**

Phone: +61 1800 805 372  
Fax: +61 1300 658 799

### **South Australia**

Phone: +61 1800 805 372  
Fax: +61 1300 658 799

### **Victoria**

Phone: +61 1800 805 372  
Fax: +61 1300 658 799

### **Western Australia**

Phone: +61 1800 805 372  
Fax: +61 1300 658 799

### **Greenspan**

21 Lawson Crescent  
Coffs Harbour NSW 2450  
Phone: +61 0 2 6651 9830  
Fax: +61 0 2 6651 9831

70 Cleaver Terrace  
Belmont WA 6104  
Phone: +61 0 8 9477 1188  
Fax: +61 0 8 9479 6727

22 Palmerin Street  
Warwick QLD 4370  
Phone: +61 7 4660 1888  
Fax: +61 7 4660 1800

240 Lavarack Avenue  
Eagle Farm QLD 4009  
Phone: +61 7 3866 7829  
Fax: +61 7 3260 1916

## **EUROPE**

### **United Kingdom**

Pentair Environmental Systems Ltd  
Unit 3B Beechwood  
Chineham Business Park  
Basingstoke, Hampshire  
RG24 8WA  
United Kingdom  
Phone: +44 1256 817 800  
Fax: +44 1256 332 760

### **Germany**

Pentair Umwelttechnik GmbH  
Im Petersfeld 6  
D-65624 Altendiez  
Germany  
Phone: +49 6432 95299-0  
Fax: +49 6432 95299-24

### **Italy**

Mecair s.r.l  
Via per Cinisello 97  
20834 Nova Milanese  
Monza e Brianza, Italy  
Phone: +39 0362 3751  
Fax: +39 0362 367 279

## **USA**

### **Corporate Office**

#### **Goyen Valve LLC**

1195 Airport Rd  
Lakewood, NJ 08701  
732-364-7800

### **CEMS & Process Gas Monitoring**

Sales, Technical Support & Proposals  
Gary Cacciatore  
714-538-7212  
Gary.Cacciatore@Pentair.com

### **Service & Support**

Don Ribbens  
402-680-6669  
Don.Ribbens@Pentair.com

## **ASIA**

### **China**

21/F, Cloud 9 Plaza  
1118 West Yan An Road  
Shanghai 200052  
China  
Phone: +86 21 5239 8810  
Fax: +86 21 3211 4582

### **Malaysia**

73-M Jalan Mega Mendung  
Kompleks Bandar, OUG,  
58200 Kuala Lumpur  
Malaysia  
Phone: +60 3 7987 6839  
Fax: +60 3 7987 7839

### **Greenspan**

Blk 13 Kaki Bukit Road 1  
Eunos Technolink #03-03  
Singapore 415928  
Singapore  
Phone: +65 6748 0140  
Fax: +65 6748 1948

